

Lawn Combers/Seeder

OWNER'S MANUAL

C18

Lawn Comber



P18

Lawn Comber



P18

Lawn Comber - Bagger



P18

Seeder



Index

Operator's Guide Page

Specification.....	1
C18/P18 Model Number Format.....	2
Assembly - Put into Service.....	3
Features And Controls.....	4
General Safety Instructions.....	5
Using Your New Comber / Seeder	9
Maintenance and Service	
Inspection Schedule	9
Blade Versatility	
Flail Blade.....	10
Delta Blade	11
Spring Tine	11
Drive Belt Replacement.....	11
Lawn Bagger Operating Instructions.....	12
Lawn Seeder Operating Instructions.....	12
Comber / Seeder Decals	13
Decal Placement	14

Replacement Parts Lists

C18 Compact Lawn Comber	15
P18 Lawn Comber.....	17
P18 Lawn Comber With Bagger.....	19
P18 Seeder	21
Flail Blade Reel.....	23
Delta Blade Reel	24
Spring Tine Reel.....	25

Attachments

7000-P18 Catcher Bag Attachment	26
6900-P18 Seeder Attachment.....	28

General Product Information

Warranty	31
Purchase Record.....	31
Sales And Service Contact.....	31



C18/P18 series Comber/Seeder Specifications

Specifications	C18	P18
Engine options	3.5HP B&S (2.6kw) (Spring tines only) 4HP Honda (3kw) (Spring tines only) 5.5HP B&S Intek (4.1kw) (Flail or Delta) 5.5HP Honda (4.1kw) (Flail or Delta)	5.5HP B&S Intek (4.1kw) 5.5HP Honda (4.1kw) 8HP B&S (6kw)
Combing width	18"	
Clutch control	Handle mounted with automatic safety declutching	
Clutch mechanism	Spring loaded belt tightener and idler pulley	
Combing/Seeding width	18" (45.7cm)	
Depth adjustment	Adjustable depth control w/ uni-lever mechanism with lock and stop	
Flail blades reel	52 case hardened steel with 5/8" (1.6cm) spacing 1/8"x1"x31/2" (0.3x2.5x8.9cm)	52 case hardened steel with 5/8" (1.6cm) spacing 1/8"x1"x4" (0.3x2.5x10.2cm)
Delta blades reel	20 austempered 12-gauge steel with 2" (5cm) spacing	
Spring tines reel	52 tines with plastic protection sleeve	N/A
Construction	Uni-body welded 10 gauge	
Drive	V-pulley, belt and belt keeper	
Handle	Folding Ergonomic design w/ padding	Rigid Ergonomic design w/ padding
Catcher bag	N/A	8 cu.ft (0.23m ³) synthetic fabric with rolling tray
Seed hopper	N/A	1,358 cu.inch (22.3 l) or appr. 30 lbs (13.6kg) of seeds Self driven agitation Viewing window
Weight (Less 20 lbs without engine)	127 lbs (57.6kg)	Seeder 165lbs (74.8kg) Comber 144lbs (65.3kg) Bagger 157lbs (71.2kg)
Width	28" (71cm)	26 1/2" (67.3cm)
Length	20" (50cm) w/o handle 37" (94cm) w/ handle	26 3/4" (68cm) w/o handle 50" (127cm) w/ handle
Height	23 1/4" (59cm) w/o handle 41" (107cm) w/ handle	24" (61cm) w/o handle 40" (102cm) w/ handle
Wheel base	12 1/4" (31cm) center to center	17 3/4" (45cm) center to center
Bearings	3/4" sealed flange cartridge	
Wheels	Front: 8"x1 3/4" (20.3cm x 4.4cm) Rear: 8"x1 3/4" (20.3cm x 4.4cm)	Front: 8"x 1 3/4" (20.3cm x 4.4cm) Rear: 10"x2 3/4" (25.4cm) (Bagger unit) Rear: 10"x1 3/4" (Seeder unit)



C18/P18 Combers and Seeders

1. Model Name Format: 7 digits format

DECK TYPE / WORKING WIDTH / ENGINE/BLADE / PRODUCT

- (1) Deck type: -C: compact
 -P: professional
- (2) Working width: 18"
- (3) Engine: -00: Less engine
 -3B: 3.5HP B&S w/ 6:1 gear reduction
 -4H: 4HP Honda w/ 6:1 gear reduction
 -5B: 5.5HP B&S Intek
 -5H: 5.5HP Honda
 -8B: 8HP B&S
- (4) Blade -F: flail
 -D: delta
 -T: spring tines
- (5) Product: -C: comber
 -B: bagger (catcher bag)
 -S: seeder

Example: P185BFB is a P18 series unit with a 5.5HP B&S Intek engine, flail blades and a catcher bag.

2. Product Offering:

a) C18 Series

		Engine options				
		Less Engine	3.5HP B&S	4HP Honda	5.5HP B&S Intek	5.5HP Honda
Blade	Flail	C1800FC	N/A	N/A	C185BFC	C185HFC
Options	Delta	C1800DC	N/A	N/A	C185BDC	C185HDC
	Tines	C1800TC	*C183BTC	*C184HTC	N/A	N/A

*Requires 6:1 Gear Reduction for tine reel assemblies.

b) P18 Series

• Combers (C)

		Engine Options			
		Less Engine	5.5HP B&S Intek	5.5HP Honda	8HP B&S
Blade	Flail	P1800FC*	P185BFC	P185HFC	P188BFC
Options	Delta	P1800DC*	P185BDC	P185HDC	P188BDC

2. Product Offering:

b) P18 Series

- **Combers with Catcher Bags ,(B). Flail reel only. Delta reel not recommended.**

Engine Options				
	Less Engine	5.5HP B&S Intek	5.5HP Honda	8HP B&S
Flail	P1800FB*	P185BFB	P185HFB	P188BFB

- **Seeders (S). Delta reel only. Flail reel not recommended.**

Engine Options				
	Less Engine	5.5HP B&S Intek	5.5HP Honda	8HP B&S
Delta	P1800DS*	P185BDS	P185HDS	P188BDS

* if ordering "less engine" for a standard 5hp, the pulley and belt are included. If ordering "less engine" for an 8hp, the pulley and V-belt must be ordered separately. (Pulley part number is 54020 and V-belt part number is 54018.)

Assembly - Put into Service

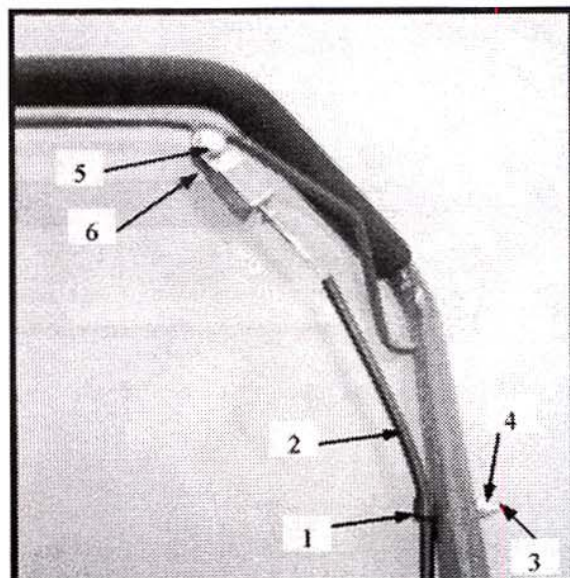
1. Attach handle to comber.
2. Attach cable to bail using 5/16" bolt and nut. **Do not overtighten**, clevis must swing freely. Adjustment nut on clevis should be at midpoint of thread.
3. Slide clip over cable. **Clip must be 4-1/2" from top edge of clip to end of cable sheathing.**
4. Attach clip to handle through hole in handle using 1/4" bolt and nut. Note: Hole through P18 handle is oriented 90 degrees from hole shown in picture. The clip is still mounted through this hole.
5. Test clutch handle to insure clutch spring stretches 2" maximum and releases freely.
6. Add engine manufacturer's recommended oil to engine. (Refer to enclosed engine manufacturer's manual and follow starting instructions before proceeding further.)
7. The engine speed is pre-set by manufacturer. The correct speed is 3200 to 3400 RPM. Consult the engine manufacturer's manual for directions to adjust the governor and carburetor if speed is not within this range.

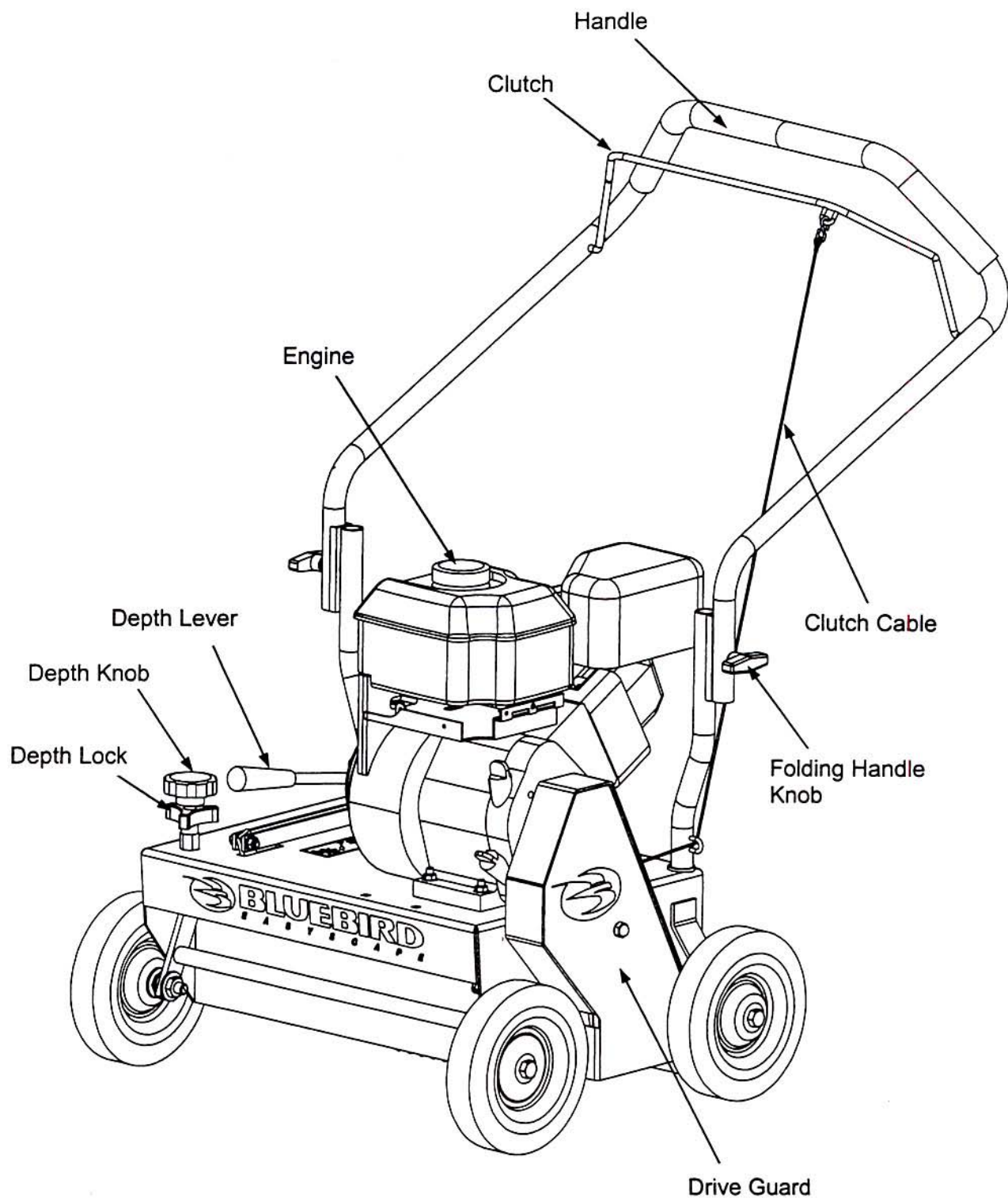
CABLE ATTACHMENT

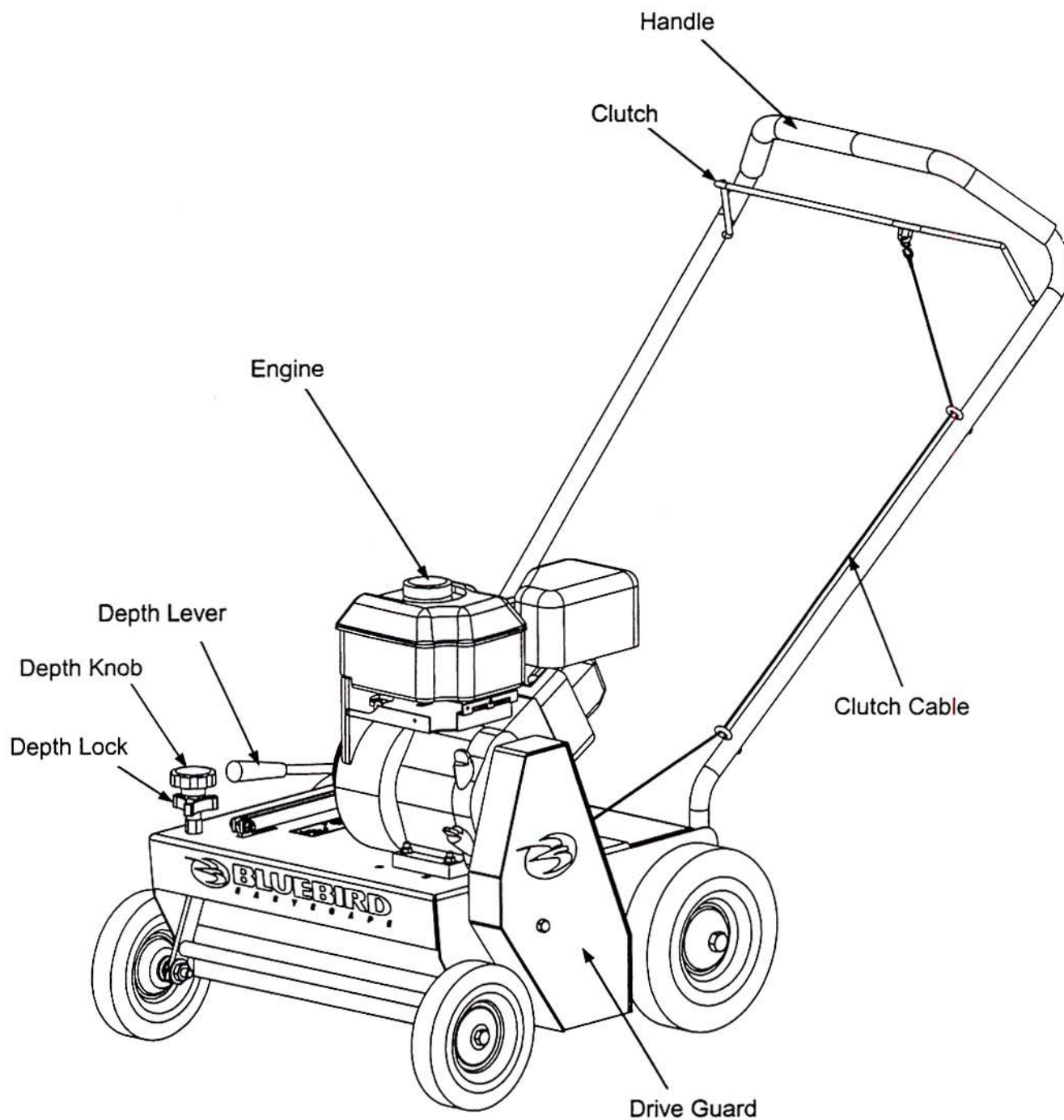
Item	Description	Qty
1	Clip, Tube	1
2	Clutch Cable	1
3	Bolt, Hex, 1/4-20 x 1-1/2	1
4	Nut, Nylon, 1/4-20	1
5	Bolt, Hex, 5/16-18 x 1	1
6	Nut, Nylon, 5/16-18	1

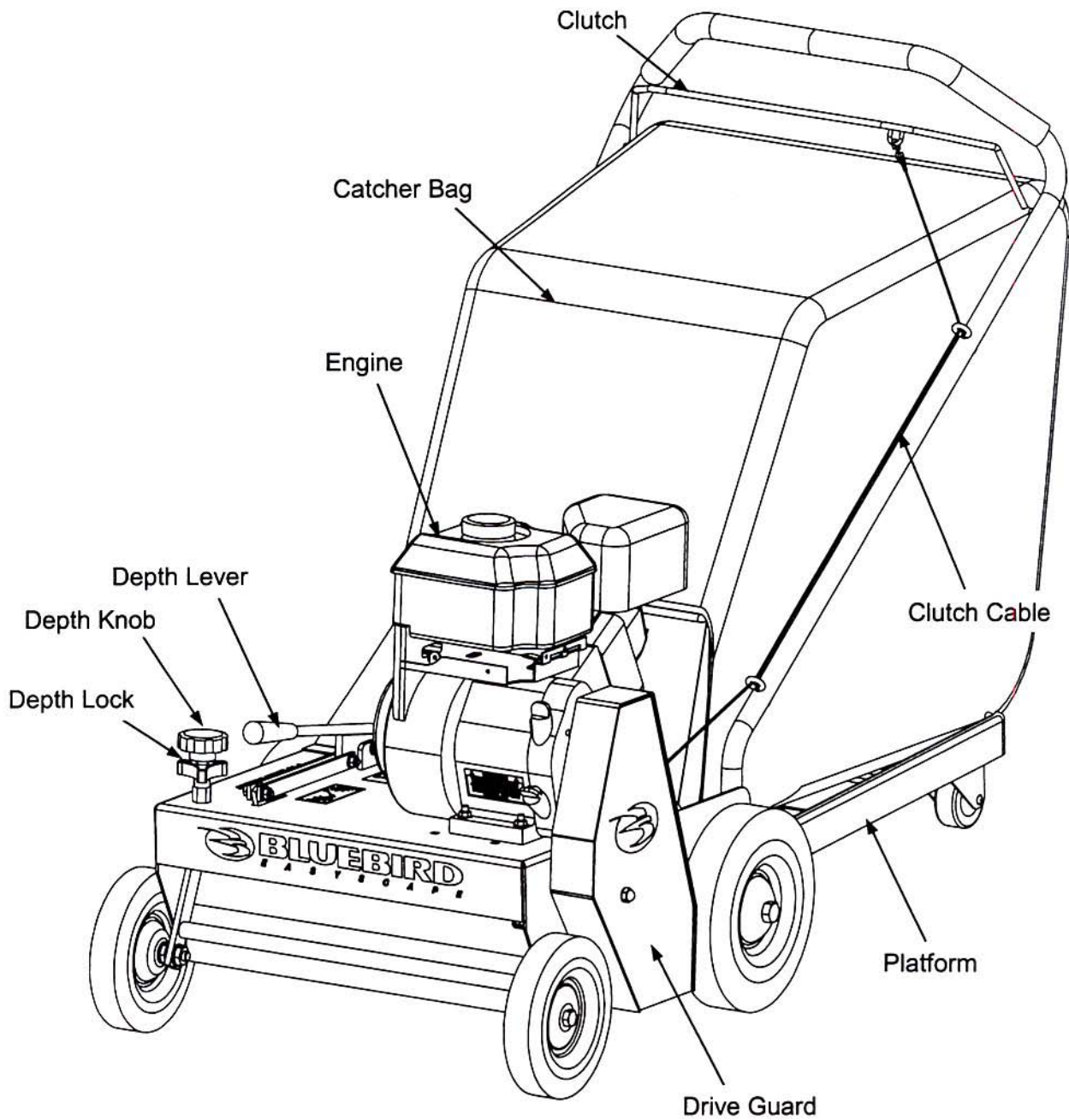
Tools Required:

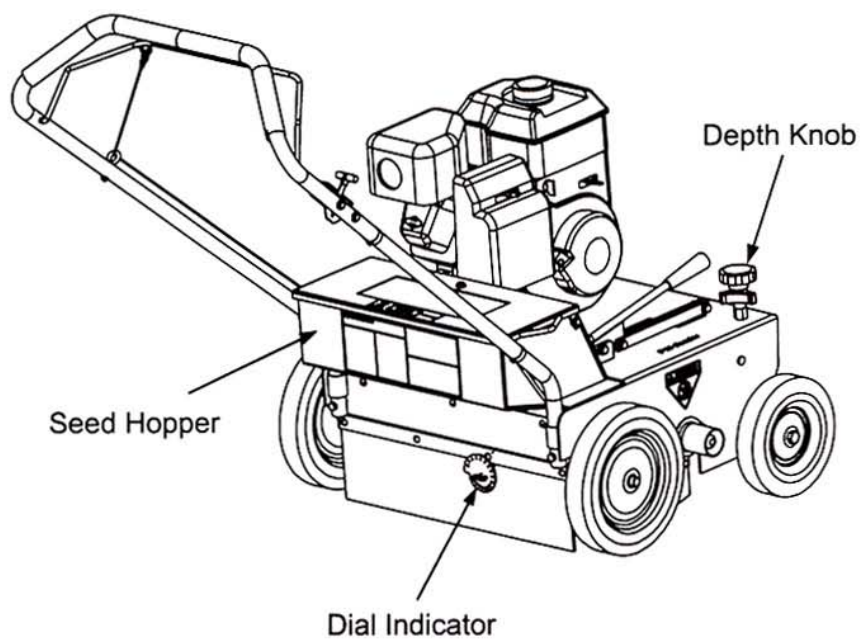
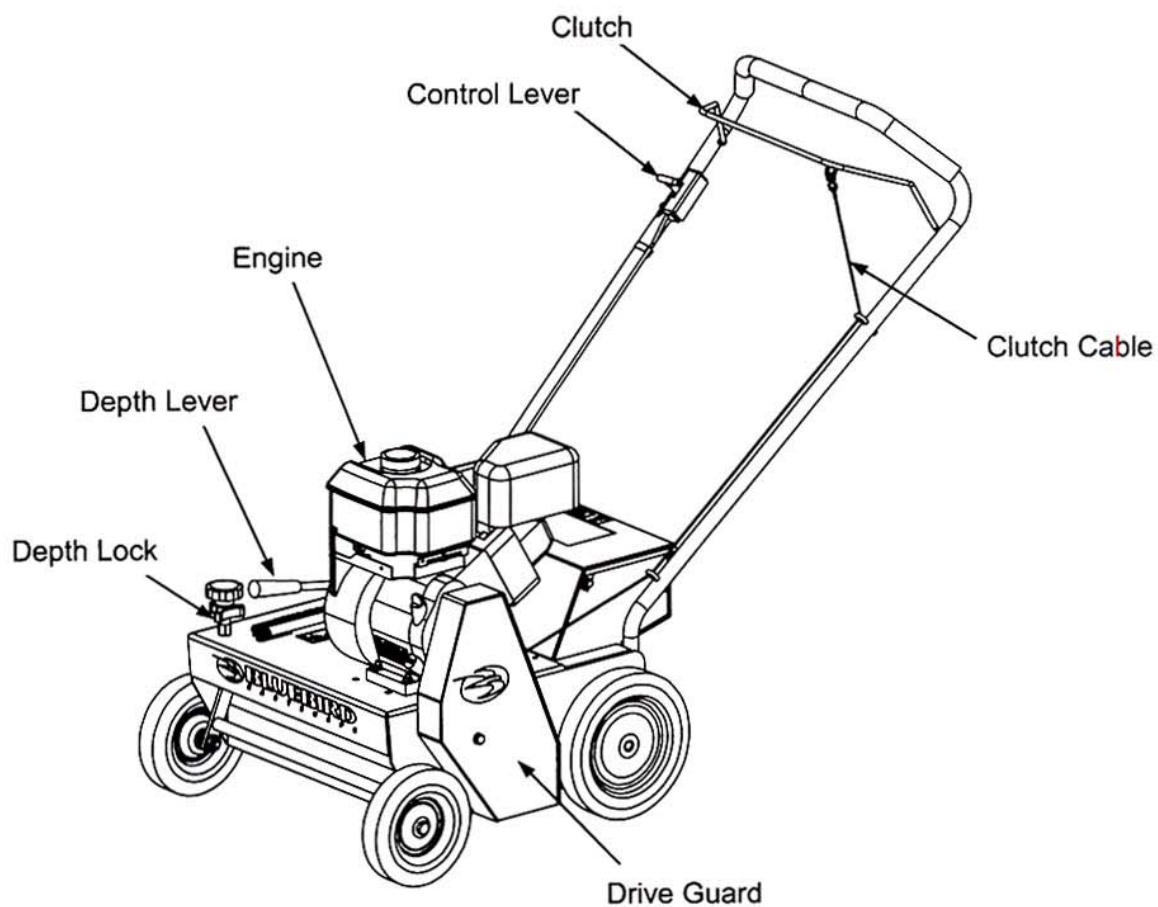
1. Ratchet
2. 1/2" Socket
3. 1/2" Wrench
4. 7/16" Socket
5. 7/16" Wrench











General Safety Instructions

This manual will assist you in the safe operation and proper maintenance of your BlueBird equipment. Read it thoroughly before attempting to operate the machine. Call your dealer or BlueBird if additional information is required.

This equipment should not be modified without the manufacturer's prior written authorization. Doing so may not only affect the equipment's performance and durability, but also create safety hazards for the operator and the surroundings. Warranty will be voided if changes are made to the equipment without the manufacturer's prior written authorization.

- DO NOT operate or perform maintenance on this machine without first reading the entire owner's manual.
- DO NOT operate on hills exceeding 35% grade. It is recommended for best uniformity that hills be power raked across the slope, not up and down the slope. DO NOT leave the unit sitting on a slope unattended. It has no parking brake.
- DO NOT tear down the engine, as this may void the Engine Manufacturer's Warranty. Contact your nearest engine manufacturer's authorized servicing dealer for engine service and warranty questions. Follow all engine manufacturer's maintenance instructions. Should any malfunction occur with the engine during the warranty period, take to an Authorized Service Dealer.
- DO NOT run engine while servicing.
- DO NOT use on any surface other than grass.
- DO NOT place hands or feet near moving or rotating parts.
- DO NOT run engine in an unventilated space.
- DO NOT smoke or allow open flame or sparks near unit and always stop the engine when fueling.
- DO NOT remove guards while operating.
- DO NOT modify this equipment.
- DO NOT use this equipment for purposes other than lawn dethatching/seeding/verticutting.
- CAUTION! Inspect lawn and remove any rocks, wire, string and other objects that might present a hazard before starting.
- CAUTION! Identify and mark all ground objects to be avoided, such as sprinkler heads, stakes, water valves, clothesline anchors, etc.
- CAUTION! Use machine for grass lawns only.
- CAUTION! Keep children away from equipment.
- CAUTION! Adopt safe lifting and moving techniques when loading/unloading equipment.
- CAUTION! Make sure all safety decals are in place.
- CAUTION! BlueBird parts have been designed and specified to meet commercial operating standards for strength and durability. For reliability and preservation of design safety standards, replacements should only be made with genuine BlueBird parts or material of equivalent type and strength.
- CAUTION! Any modifications or additions to this equipment without written authorization from the manufacturer will void all manufacturer's warranties.
- CAUTION! To turn and maneuver your machine, bear down on the handle and pivot on the rear wheels.
- CAUTION! To transport your Comber/Seeder:
 - Shut off engine and allow engine to cool for 2 minutes.
 - Close folding handle if unit is furnished with one.
 - It is recommended that two people lift machine.
 - Secure in place during transport.

Using Your New Comber/Seeder

Before You Start

- Mow the lawn to its normal cut height.
- Allow lawn to dry. Wet conditions may cause increased damage to healthy grass.
- Set rake depth so that blades just touch on a flat surface like a sidewalk or driveway.
- Lawns with deep thatch exceeding $\frac{1}{4}$ " may be best dethatched in two treatments (spring and fall) to avoid major shock to an older lawn.

Starting

- To engage clutch in heavy thatch, bear down on the handle to slightly raise the front wheels. Engage the clutch and slowly lower the unit into the turf.
- Do a small test area at a slow walking pace.
- If the engine RPM drops excessively, the depth setting is too low.
- If the unit pulls forward and bounces roughly, the depth setting is too low.

Finishing

- Remove all extracted thatch from the grass and compost/dispose of properly.
- Other procedures to improve your lawn may include aeration and fertilization.

Storage

- Refer to engine manufacturer's instructions for engine storage information.
- Clean machine.
- Cover all scratches with touch up paint.
- Lubricate accordingly.
- Covered or indoor storage is recommended.

Maintenance and Service

Inspection Schedule:

Each Use	20 hrs	
<input checked="" type="checkbox"/>	<input type="checkbox"/>	Seeder holes – remove dirt/plug
<input checked="" type="checkbox"/>	<input type="checkbox"/>	Engine oil (Refer to engine mfg. manual)
<input checked="" type="checkbox"/>	<input type="checkbox"/>	Clutch cable
<input checked="" type="checkbox"/>	<input type="checkbox"/>	Decals and warning
<input checked="" type="checkbox"/>	<input type="checkbox"/>	Fasteners and fittings
<input type="checkbox"/>	<input checked="" type="checkbox"/>	Belt wear (cracks, fraying, corners rounding)
<input checked="" type="checkbox"/>	<input type="checkbox"/>	Folding handle latch
<input type="checkbox"/>	<input checked="" type="checkbox"/>	Blade wear
<input type="checkbox"/>	<input checked="" type="checkbox"/>	Frame condition (rust, cracks, etc.)
<input checked="" type="checkbox"/>	<input type="checkbox"/>	Blade shaft spring clips
<input checked="" type="checkbox"/>	<input type="checkbox"/>	Engine air cleaner (see engine manual)

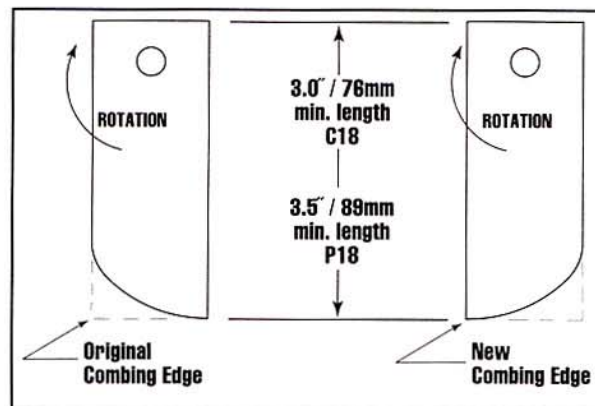
Blade Versatility

- **Flail Blade** (For any replacement parts for the Flail reels, please see page 23)

Thatch is the dense layer of clippings, roots and stems that form between the soil and the base of the grass. As thatch builds up it prevents water, air and fertilizer from being absorbed into the soil, which causes shallow root development leading to drought susceptibility and winter kill. Excessive thatch also creates an ideal environment for insects and lawn diseases. Power raking with flail blades removes this thatch layer and restores your lawn to good health. Flail blades offer the most aggressive dethatching of all the blades offered.

Adjusting Flail Blade Height – the blades are raised and lowered by means of a height adjustment lever on the right side of the deck. The knob at the front of this lever controls the depth. Turning the knob counter-clockwise allows the blades to go deeper.

Flail Blade Wear/Rotation/Replacement – After your BlueBird unit has been used for some time, the blades will wear on the striking edge as shown. When this happens, their dethatching performance will diminish. A new combing edge may be obtained by simply rotating the entire rotor shaft assembly end for end, which will result in a new edge shown. This process may be repeated until the blades reach their wear limits. To turn the rotor shaft end for end instructions follow:



Rotating Rotor Shaft–

1. Allow engine to cool
2. Disconnect spark plug
3. Remove belt guard
4. Remove belt and pulley from rotor shaft
5. Remove plastic cap from opposite end of shaft and install where pulley was located
6. Remove the 4 bearing bolts and drop out rotor shaft
7. Inspect shaft, bearings, blade length, blade safety clips and spacers
8. Rotate shaft end for end
9. Reinstall bearing bolts
10. Reinstall pulley, ensuring pulley is flush against the bearing collar
11. Check pulley alignment to engine shaft pulley and adjust if necessary
12. Reinstall belt and belt guard
13. Reattach spark plug wire

Replacing Worn Flail Blades-

1. Allow engine to cool
 2. Disconnect spark plug
 3. Remove belt guard, belt and shaft pulley
 4. Take out and dispose of spring clips that hold the shaft in position.
 5. Inspect the blade shafts and replace if bent or worn.
 6. Drive blade shafts out toward the center. The blades and spacers will fall off.
 7. Install new blades, replacing rubber spacers if necessary. Refer to parts drawing for blade/spacer placement. (see page 23)
 8. Install new spring clips.
 9. Repeat for remaining three shafts.
 10. Reinstall pulley and align to engine pulley.
 11. Reinstall belt and belt guard.
 12. Reattach spark plug wire.
- **Delta Blade** (For any replacement parts for the Delta reel, please see page 24)
Delta blades were created primarily for overseeding existing lawn, which effectively incorporates grass seed into the soil. This is an easy, reliable method for rejuvenating poor lawns. The Delta blade is also useful as a vertical mower for cutting running stem grasses and for opening the soil to oxygen, water, nutrients and other chemicals. Also Delta blades are beneficial on slopes, terraces and in high clay content soils where water runoff is a problem.

Adjusting Delta Blade Height – the blades are raised and lowered by means of a height adjustment lever on the right side of the deck. The knob at the front of this lever controls the depth. Turning the knob counter-clockwise allows the blades to go deeper.

Delta Blade Wear/Replacement – Over time, due to wear, the blades will diminish in length. When blades have worn down by $\frac{1}{4}$ " (the overall length at the longest point of the blade will be $2\frac{1}{2}$ "), it will be necessary to replace the blades.

- **Spring Tine** (For any replacement parts for the Spring Tine reel, please see page 25)
Ideal for the established lawn that is not in need of complete renovation but requiring dethatching (dry-spots, fungus, etc.) Spring tines are designed to pluck dead grass and thatch out of the lawn without tearing or damaging existing root structure. With its flexible tines, lawn is combed only $\frac{1}{4}$ " into the soil so it cannot penetrate into the root structure. Spring tines provide less aggressive dethatching than flail blades.

Adjusting Spring Tines Height – the tines are raised and lowered by means of a height adjustment lever on the right side of the deck. The knob at the front of this lever controls the depth. Turning the knob counter-clockwise allows the tines to go deeper.

Spring Tine Wear/Replacement – Over time, due to wear, the tines will diminish in length. When the tines can no longer be adjusted to comb $\frac{1}{4}$ " into the soil, the tines must be replaced. Spring tines can be replaced without removing the reel assembly by using a $\frac{1}{2}$ " socket.

Drive Belt Replacement

The following procedure should be followed to replace the drive belt:

1. Allow engine to cool
2. Remove spark plug wire
3. Remove belt guard
4. Remove old belt
5. Inspect pulley for wear and replace if necessary
6. Check engine pulley to rotor pulley alignment and adjust if necessary
7. Inspect belt idler. Idler roller bearing should rotate smooth and free. Idler pivot arm should be free with no more than 0.25" side play. Replace if necessary.
8. Install new belt by looping over bottom pulley first, then over engine pulley. Be sure belt idler and belt keepers are outside the loop of the belt.
9. Adjust the belt keeper as necessary and reinstall the belt guard.
10. Reattach the spark plug wire.

Lawn Bagger Operating Instructions

(See page 26 for additional instruction for Catcher Bag Assembly)

Attaching the Bagger Platform

Place the hooks on platform into the slots at the rear of the machine. Push platform into the slots. Raise up end of platform about 45 degrees. The hooks on the front of the platform will slip down into "keyhole slots".

Catcher Bag

Bag damage most commonly occurs due to improper assembly of bag to frame. Be sure to follow assembly instructions included with your bag.

Proper Height Setting

Thatch is thrown into the catcher by the impact of the flail blades swinging through the grass. The blades should not hit the ground. If the blades hit the ground, they will bounce causing ineffective dethatching.

Lawn Conditions for Bagging

Best performance will be achieved in lawns that are cut short and free of moisture. Wet lawns will hamper the bagging effectiveness. Long grass may result in tearing or ripping of the lawn. If the lawn has a heavy build up of thatch, it is recommended to go over it in one direction and do it again at a right angle. A heavy buildup of thatch may have taken years to accumulate – it may take 2 or 3 sessions of combing to remove it. Do not try to correct a severe problem with one pass over the lawn.

Lawn Seeder Operating Instructions

(See page 28 for additional instruction for Lawn Seeder Assembly)

General Information

The seed hopper is located at the back of the machine. Seed deposit is spaced in 2" increments and seeds are dropped after the blades have sliced the soil. As the lawn seeder moves forward, the heavy neoprene deflector at the rear of the seeder smoothes the soil so the seed is covered.

To avoid the unattractive effect of "rows" of new grass, it is recommended to overseed in one direction, then "cross-cut" at approximately 45 degrees from the first run. When you use this procedure, set the seed drop setting at 1/2 of the recommended application rate per 1,000 square feet.

The lawn seeder is not a "thatcher". Excess thatch (if present) should be removed with a thatcher before overseeding. Seed must have contact with soil (including soil cover) to germinate.

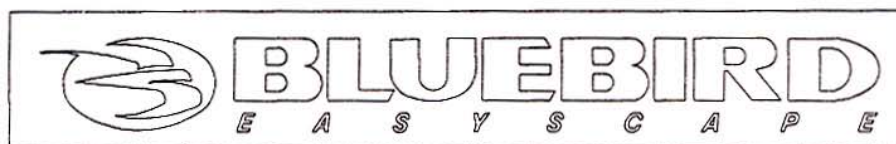
Setting the Seed Hopper

There is a seed application chart on the back of the seed hopper. The seed adjustment dial is on the rear of the seed hopper. To set the seed adjustment, loosen the wing nut, rotate the adjusting dial to the correct setting, then tighten the wing nut. The seed control lever is located on the handle of the seeder unit.

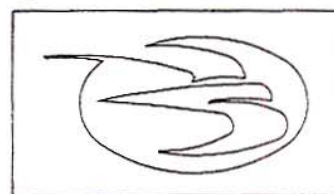
When the seed control lever is in the open position, the adjusting dial controls how far the seed gate can open. The seed control lever allows you to turn off the flow of seed when making turns and when filling the seed hopper.

Comber/Seeder Decals

1



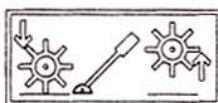
5



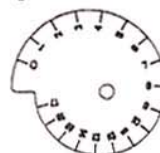
2

C18 Lawn Comber

6



7



8



3

P18 Lawn Comber

9

SEED APPLICATION CHART:				LAWN PREPARATION:			
THOSE SETTINGS ARE APPROPRIATE GUIDELINES. SEEDING RATES ARE SEEDS PER SQUARE FOOT. FASTER TRAVEL, COLLECTORS LEAVE SEED.				DO NOT SEED TO VY HEIGHT. DO NOT SEED PRIOR TO SEEDING. FERTILIZER SHOULD BE SEEDING LATER AND REMOVE THAT IN EXCESS OF VY. SEEDING LATER WITH COMB TYPE SEEDER. FERTILIZER LATER WITH COMB TYPE SEEDER.			
SEED	SEED LBS.	SEED	SEED LBS.	SEED	SEED LBS.	SEED	SEED LBS.
PERMANENT	1 - 1 1/2	PERMANENT	1 - 1 1/2	PERMANENT	1 - 1 1/2	PERMANENT	1 - 1 1/2
2 - 2 1/4		2 - 2 1/4		2 - 2 1/4		2 - 2 1/4	
3 - 3 1/4		3 - 3 1/4		3 - 3 1/4		3 - 3 1/4	
4 - 4 1/4		4 - 4 1/4		4 - 4 1/4		4 - 4 1/4	
5 - 5 1/4		5 - 5 1/4		5 - 5 1/4		5 - 5 1/4	
6 - 6 1/4		6 - 6 1/4		6 - 6 1/4		6 - 6 1/4	
7 - 7 1/4		7 - 7 1/4		7 - 7 1/4		7 - 7 1/4	
8 - 8 1/4		8 - 8 1/4		8 - 8 1/4		8 - 8 1/4	
9 - 9 1/4		9 - 9 1/4		9 - 9 1/4		9 - 9 1/4	
10 - 10 1/4		10 - 10 1/4		10 - 10 1/4		10 - 10 1/4	
11 - 11 1/4		11 - 11 1/4		11 - 11 1/4		11 - 11 1/4	
12 - 12 1/4		12 - 12 1/4		12 - 12 1/4		12 - 12 1/4	
13 - 13 1/4		13 - 13 1/4		13 - 13 1/4		13 - 13 1/4	
14 - 14 1/4		14 - 14 1/4		14 - 14 1/4		14 - 14 1/4	
15 - 15 1/4		15 - 15 1/4		15 - 15 1/4		15 - 15 1/4	
16 - 16 1/4		16 - 16 1/4		16 - 16 1/4		16 - 16 1/4	
17 - 17 1/4		17 - 17 1/4		17 - 17 1/4		17 - 17 1/4	
18 - 18 1/4		18 - 18 1/4		18 - 18 1/4		18 - 18 1/4	
19 - 19 1/4		19 - 19 1/4		19 - 19 1/4		19 - 19 1/4	
20 - 20 1/4		20 - 20 1/4		20 - 20 1/4		20 - 20 1/4	
21 - 21 1/4		21 - 21 1/4		21 - 21 1/4		21 - 21 1/4	
22 - 22 1/4		22 - 22 1/4		22 - 22 1/4		22 - 22 1/4	
23 - 23 1/4		23 - 23 1/4		23 - 23 1/4		23 - 23 1/4	
24 - 24 1/4		24 - 24 1/4		24 - 24 1/4		24 - 24 1/4	
25 - 25 1/4		25 - 25 1/4		25 - 25 1/4		25 - 25 1/4	
26 - 26 1/4		26 - 26 1/4		26 - 26 1/4		26 - 26 1/4	
27 - 27 1/4		27 - 27 1/4		27 - 27 1/4		27 - 27 1/4	
28 - 28 1/4		28 - 28 1/4		28 - 28 1/4		28 - 28 1/4	
29 - 29 1/4		29 - 29 1/4		29 - 29 1/4		29 - 29 1/4	
30 - 30 1/4		30 - 30 1/4		30 - 30 1/4		30 - 30 1/4	
31 - 31 1/4		31 - 31 1/4		31 - 31 1/4		31 - 31 1/4	
32 - 32 1/4		32 - 32 1/4		32 - 32 1/4		32 - 32 1/4	
33 - 33 1/4		33 - 33 1/4		33 - 33 1/4		33 - 33 1/4	
34 - 34 1/4		34 - 34 1/4		34 - 34 1/4		34 - 34 1/4	
35 - 35 1/4		35 - 35 1/4		35 - 35 1/4		35 - 35 1/4	
36 - 36 1/4		36 - 36 1/4		36 - 36 1/4		36 - 36 1/4	
37 - 37 1/4		37 - 37 1/4		37 - 37 1/4		37 - 37 1/4	
38 - 38 1/4		38 - 38 1/4		38 - 38 1/4		38 - 38 1/4	
39 - 39 1/4		39 - 39 1/4		39 - 39 1/4		39 - 39 1/4	
40 - 40 1/4		40 - 40 1/4		40 - 40 1/4		40 - 40 1/4	
41 - 41 1/4		41 - 41 1/4		41 - 41 1/4		41 - 41 1/4	
42 - 42 1/4		42 - 42 1/4		42 - 42 1/4		42 - 42 1/4	
43 - 43 1/4		43 - 43 1/4		43 - 43 1/4		43 - 43 1/4	
44 - 44 1/4		44 - 44 1/4		44 - 44 1/4		44 - 44 1/4	
45 - 45 1/4		45 - 45 1/4		45 - 45 1/4		45 - 45 1/4	
46 - 46 1/4		46 - 46 1/4		46 - 46 1/4		46 - 46 1/4	
47 - 47 1/4		47 - 47 1/4		47 - 47 1/4		47 - 47 1/4	
48 - 48 1/4		48 - 48 1/4		48 - 48 1/4		48 - 48 1/4	
49 - 49 1/4		49 - 49 1/4		49 - 49 1/4		49 - 49 1/4	
50 - 50 1/4		50 - 50 1/4		50 - 50 1/4		50 - 50 1/4	
51 - 51 1/4		51 - 51 1/4		51 - 51 1/4		51 - 51 1/4	
52 - 52 1/4		52 - 52 1/4		52 - 52 1/4		52 - 52 1/4	
53 - 53 1/4		53 - 53 1/4		53 - 53 1/4		53 - 53 1/4	
54 - 54 1/4		54 - 54 1/4		54 - 54 1/4		54 - 54 1/4	
55 - 55 1/4		55 - 55 1/4		55 - 55 1/4		55 - 55 1/4	
56 - 56 1/4		56 - 56 1/4		56 - 56 1/4		56 - 56 1/4	
57 - 57 1/4		57 - 57 1/4		57 - 57 1/4		57 - 57 1/4	
58 - 58 1/4		58 - 58 1/4		58 - 58 1/4		58 - 58 1/4	
59 - 59 1/4		59 - 59 1/4		59 - 59 1/4		59 - 59 1/4	
60 - 60 1/4		60 - 60 1/4		60 - 60 1/4		60 - 60 1/4	
61 - 61 1/4		61 - 61 1/4		61 - 61 1/4		61 - 61 1/4	
62 - 62 1/4		62 - 62 1/4		62 - 62 1/4		62 - 62 1/4	
63 - 63 1/4		63 - 63 1/4		63 - 63 1/4		63 - 63 1/4	
64 - 64 1/4		64 - 64 1/4		64 - 64 1/4		64 - 64 1/4	
65 - 65 1/4		65 - 65 1/4		65 - 65 1/4		65 - 65 1/4	
66 - 66 1/4		66 - 66 1/4		66 - 66 1/4		66 - 66 1/4	
67 - 67 1/4		67 - 67 1/4		67 - 67 1/4		67 - 67 1/4	
68 - 68 1/4		68 - 68 1/4		68 - 68 1/4		68 - 68 1/4	
69 - 69 1/4		69 - 69 1/4		69 - 69 1/4		69 - 69 1/4	
70 - 70 1/4		70 - 70 1/4		70 - 70 1/4		70 - 70 1/4	
71 - 71 1/4		71 - 71 1/4		71 - 71 1/4		71 - 71 1/4	
72 - 72 1/4		72 - 72 1/4		72 - 72 1/4		72 - 72 1/4	
73 - 73 1/4		73 - 73 1/4		73 - 73 1/4		73 - 73 1/4	
74 - 74 1/4		74 - 74 1/4		74 - 74 1/4		74 - 74 1/4	
75 - 75 1/4		75 - 75 1/4		75 - 75 1/4		75 - 75 1/4	
76 - 76 1/4		76 - 76 1/4		76 - 76 1/4		76 - 76 1/4	
77 - 77 1/4		77 - 77 1/4		77 - 77 1/4		77 - 77 1/4	
78 - 78 1/4		78 - 78 1/4		78 - 78 1/4		78 - 78 1/4	
79 - 79 1/4		79 - 79 1/4		79 - 79 1/4		79 - 79 1/4	
80 - 80 1/4		80 - 80 1/4		80 - 80 1/4		80 - 80 1/4	
81 - 81 1/4		81 - 81 1/4		81 - 81 1/4		81 - 81 1/4	
82 - 82 1/4		82 - 82 1/4		82 - 82 1/4		82 - 82 1/4	
83 - 83 1/4		83 - 83 1/4		83 - 83 1/4		83 - 83 1/4	
84 - 84 1/4		84 - 84 1/4		84 - 84 1/4		84 - 84 1/4	
85 - 85 1/4		85 - 85 1/4		85 - 85 1/4		85 - 85 1/4	
86 - 86 1/4		86 - 86 1/4		86 - 86 1/4		86 - 86 1/4	
87 - 87 1/4		87 - 87 1/4		87 - 87 1/4		87 - 87 1/4	
88 - 88 1/4		88 - 88 1/4		88 - 88 1/4		88 - 88 1/4	
89 - 89 1/4		89 - 89 1/4		89 - 89 1/4		89 - 89 1/4	
90 - 90 1/4		90 - 90 1/4		90 - 90 1/4		90 - 90 1/4	
91 - 91 1/4		91 - 91 1/4		91 - 91 1/4		91 - 91 1/4	
92 - 92 1/4		92 - 92 1/4		92 - 92 1/4		92 - 92 1/4	
93 - 93 1/4		93 - 93 1/4		93 - 93 1/4		93 - 93 1/4	
94 - 94 1/4		94 - 94 1/4		94 - 94 1/4		94 - 94 1/4	
95 - 95 1/4		95 - 95 1/4		95 - 95 1/4		95 - 95 1/4	
96 - 96 1/4		96 - 96 1/4		96 - 96 1/4		96 - 96 1/4	
97 - 97 1/4		97 - 97 1/4		97 - 97 1/4		97 - 97 1/4	
98 - 98 1/4		98 - 98 1/4		98 - 98 1/4		98 - 98 1/4	
99 - 99 1/4		99 - 99 1/4		99 - 99 1/4		99 - 99 1/4	
100 - 100 1/4		100 - 100 1/4		100 - 100 1/4		100 - 100 1/4	

10



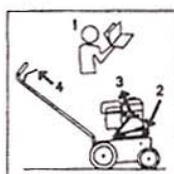
4

P18 Seeder

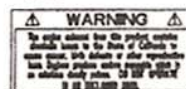
14



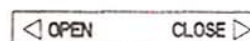
11



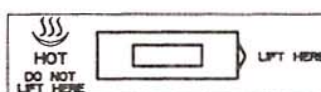
12



13



16

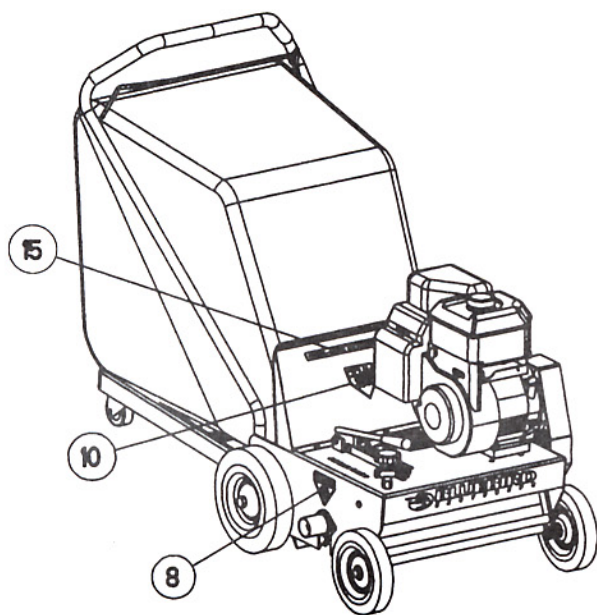
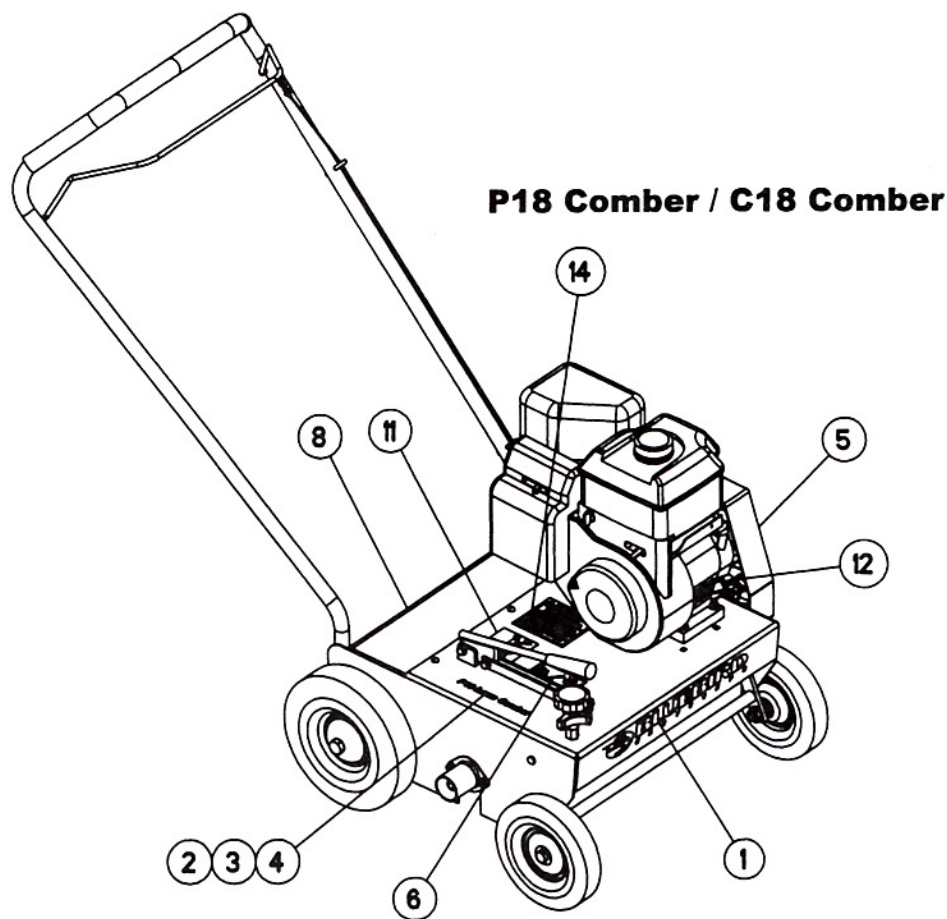


15

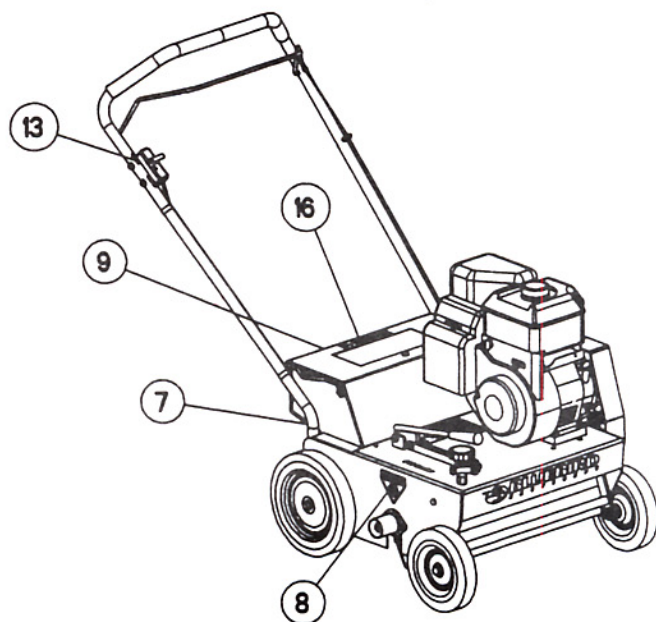
CAUTION - DO NOT USE WITHOUT CATCHER

Item	Description	C18 Comber Kit No. 54052	P18 Comber Kit No. 54053	P18 Bagger Kit No. 54054	P18 Seeder Kit No. 54055
1	Decal, BlueBird Logo W/Bird, Large	X	X	X	X
2	Decal, C18 Lawn Comber	X			
3	Decal, P18 Lawn Comber		X	X	
4	Decal, P18 Seeder				X
5	Decal, BlueBird Bird, 4"	X	X	X	X
6	Decal, Height Adjustment	X	X	X	X
7	Decal, Gage Dial				X
8	Decal, Danger Foot	X	X	X	X
9	Decal, Seed Application Chart				X
10	Decal, Danger Chute			X	
11	Decal, Controls, P18/C18	X	X	X	X
12	Decal, Warning Carbon Monoxide	X	X	X	X
13	Decal, Open/Close, Written				X
14	Decal, Caution List	X	X	X	X
15	Decal, Caution Catcher			X	
16	Decal, "HOT" Seeder Lid				X

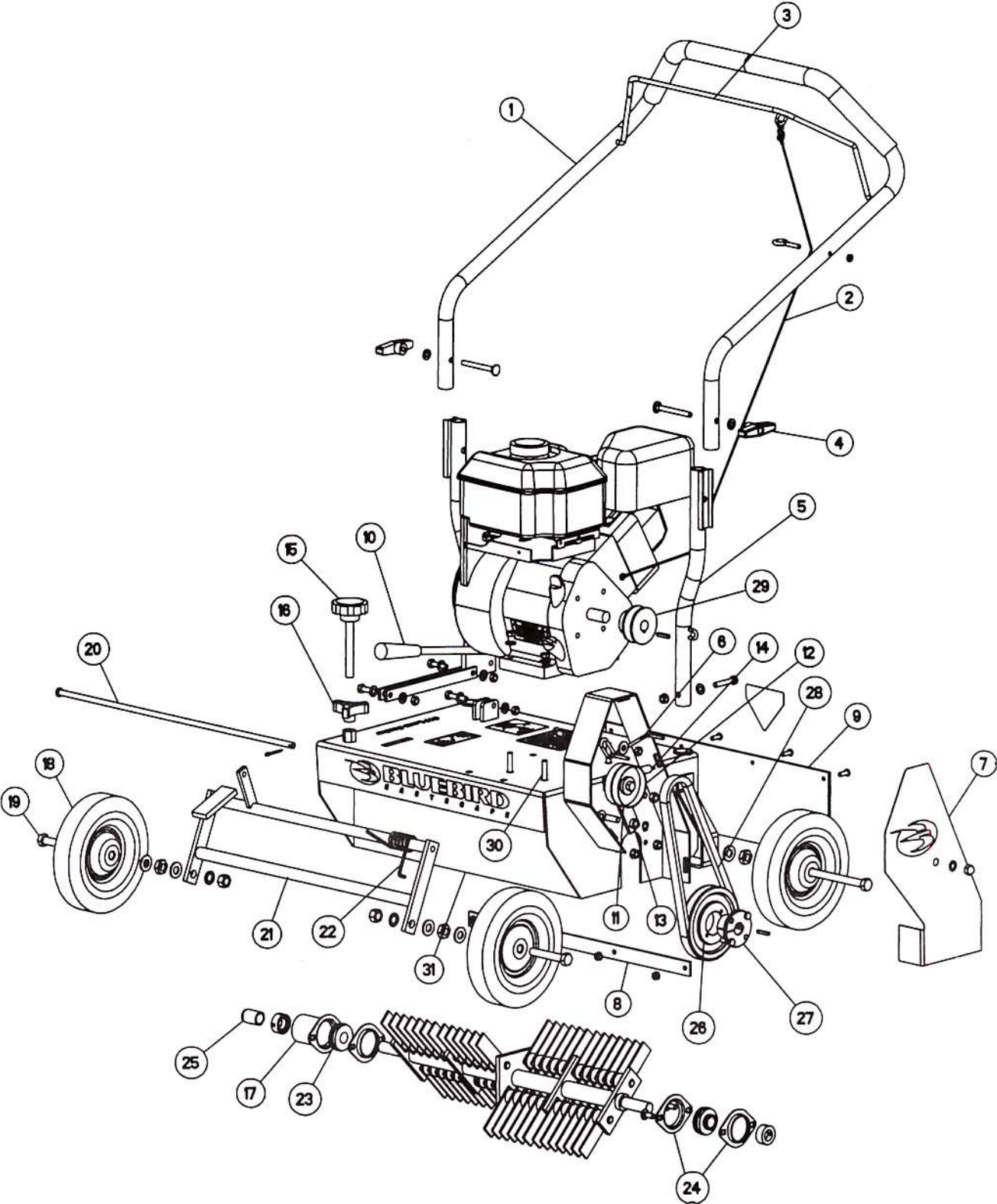
Decal Placement



P18 Comber With Bagger



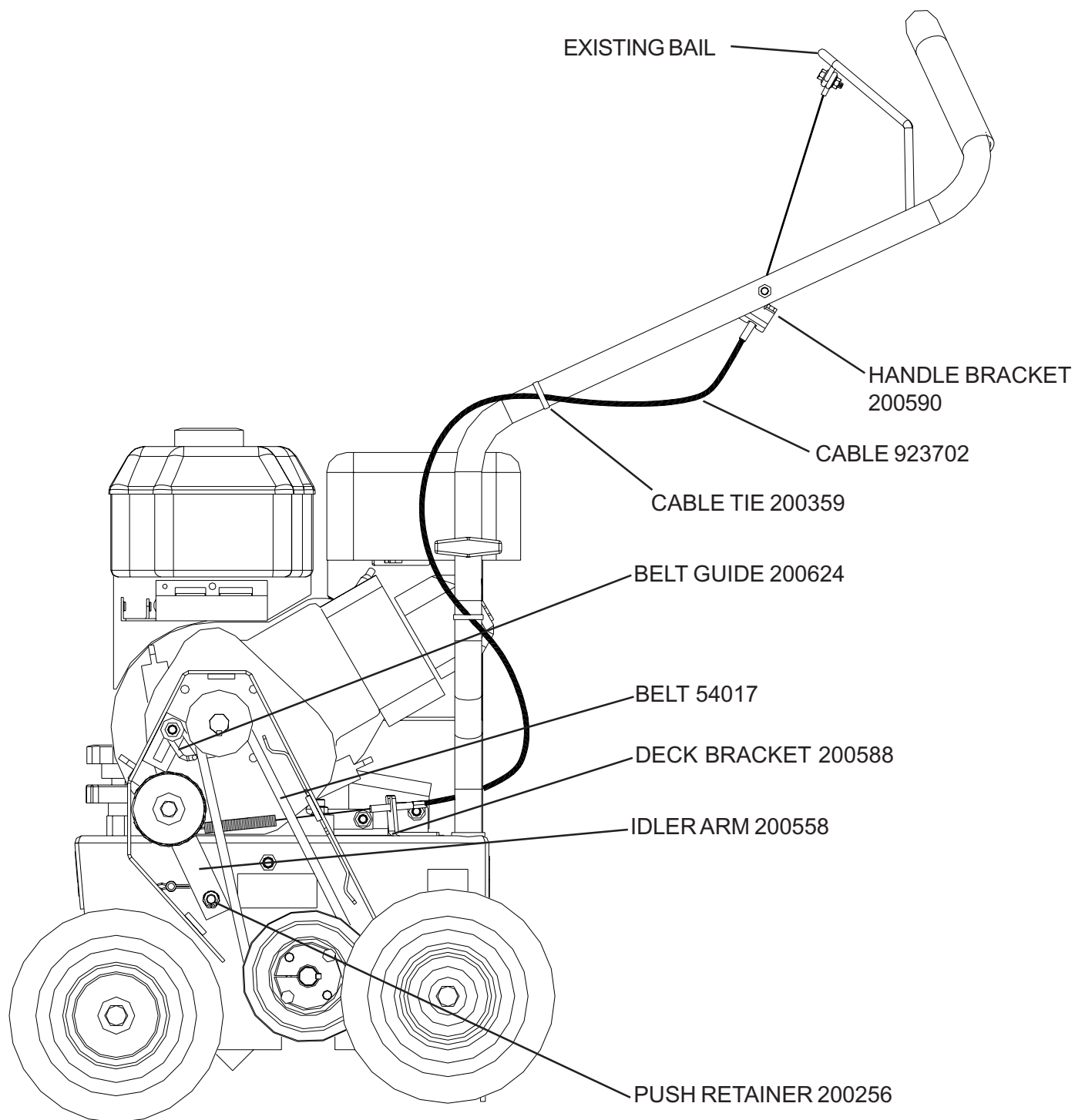
P18 Seeder



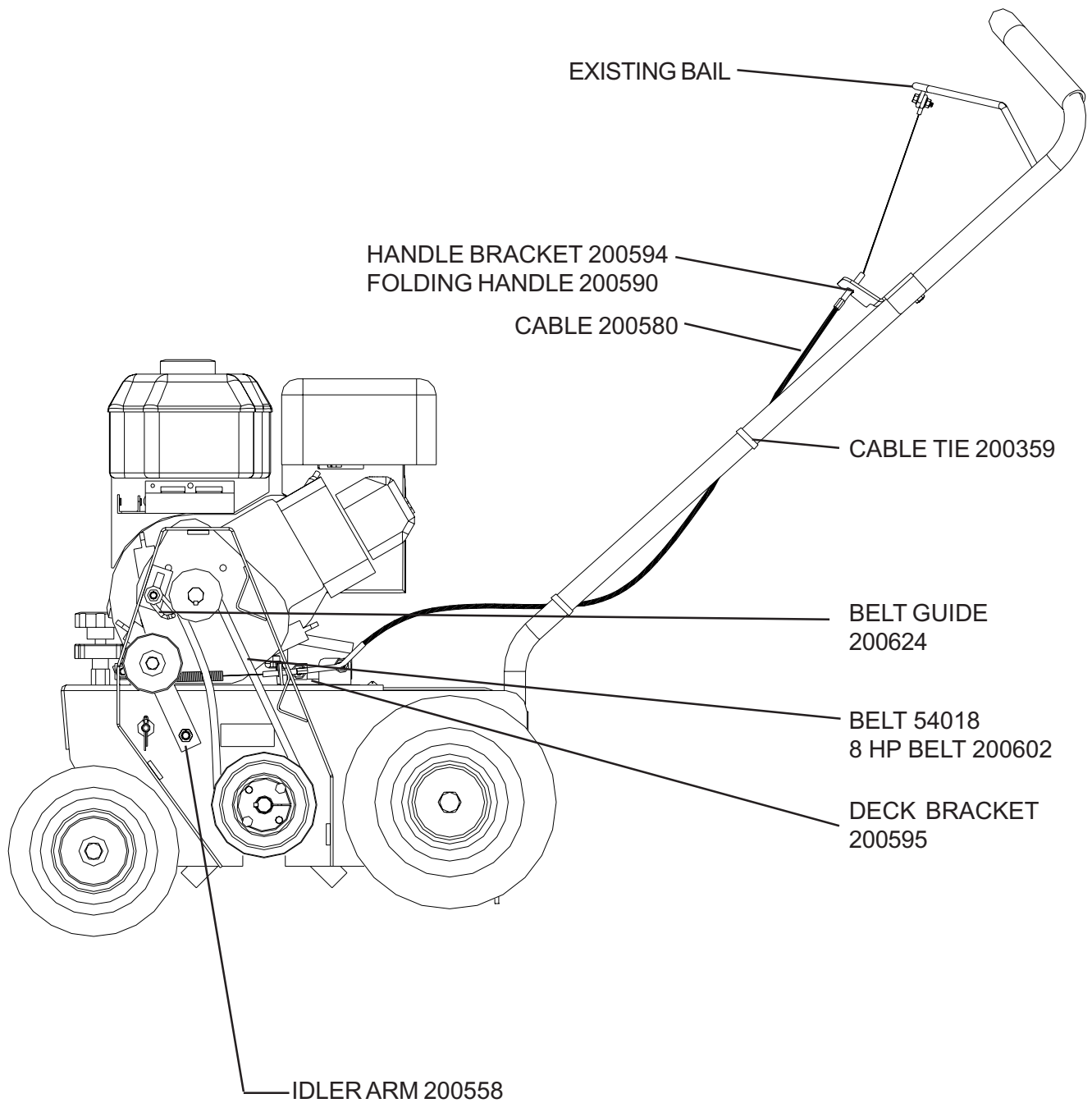


Manual insert for cable and belt upgrade on models C 18 and P 18 basic model and with seeder and bagger options.

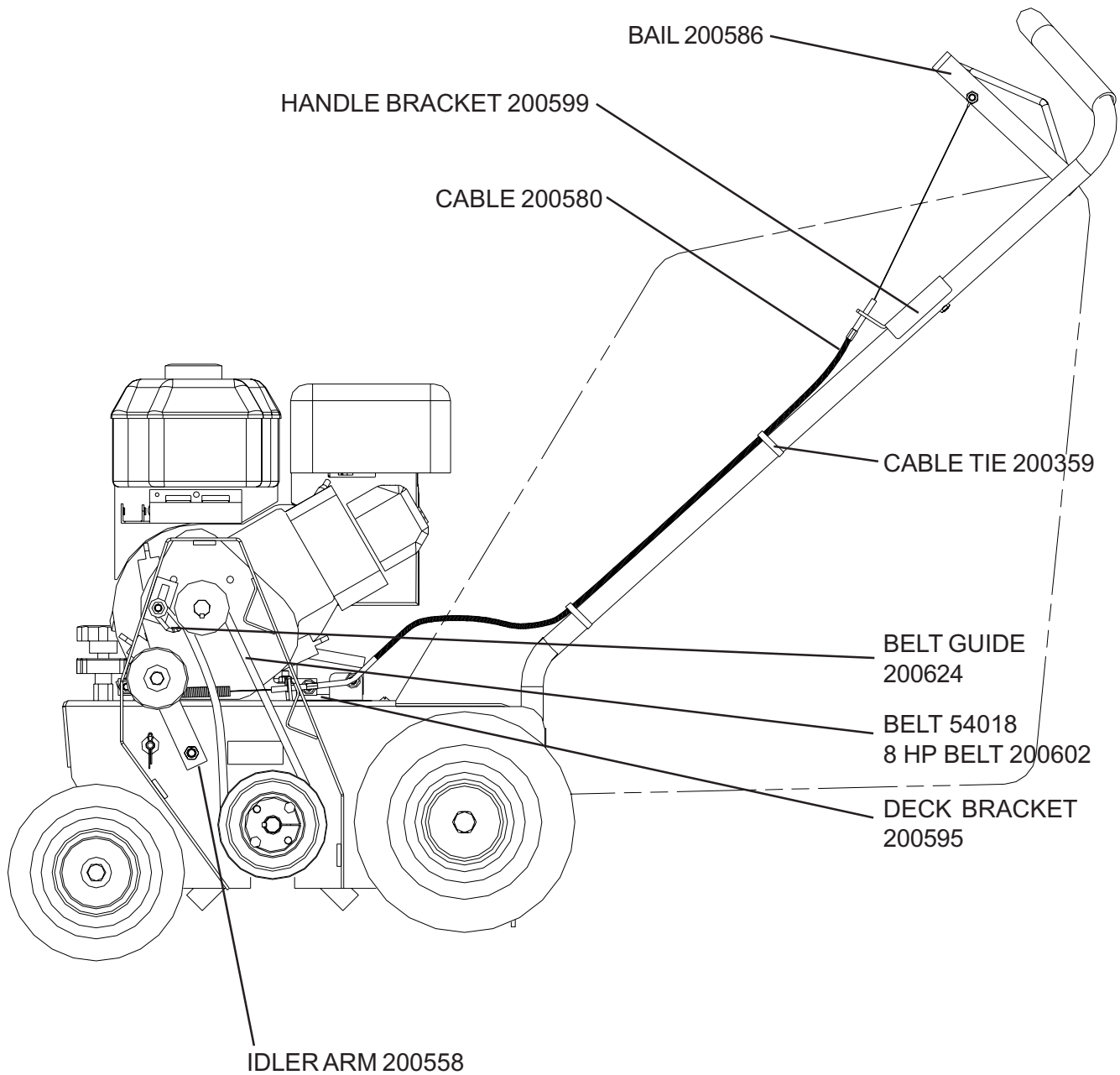
C 18 BASIC MODEL



P 18 BASIC MODEL

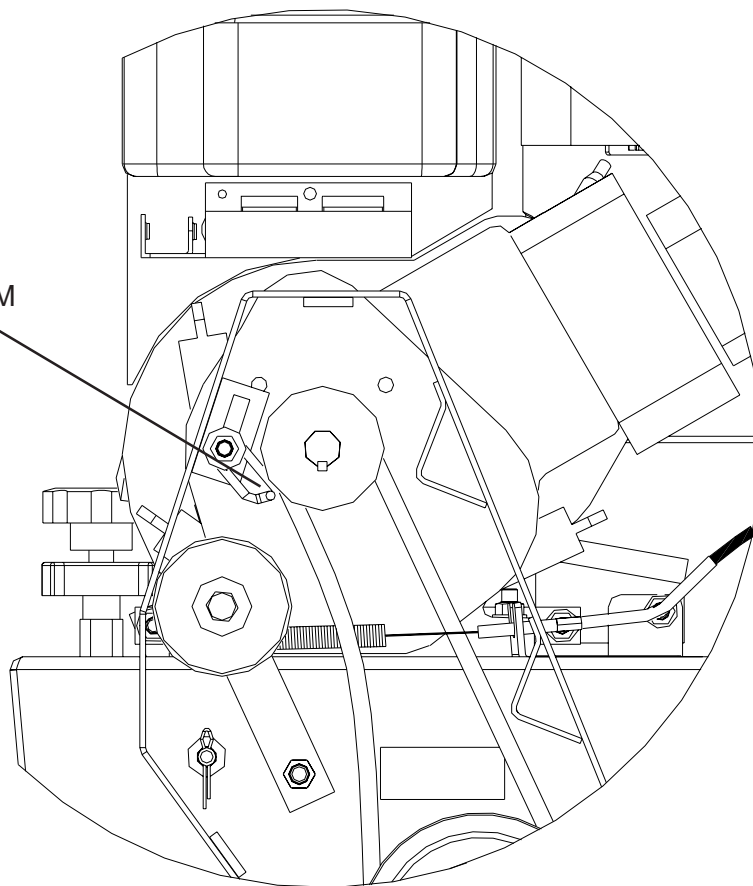


P 18 WITH BAGGER OPTION



Adjust belt guide as shown below. Gap between the belt guide and the pulley needs to be 1/16"

INSTALL BELT GUIDE
AS SHOWN, 1/16" FROM
THE PULLEY



When you stand and pull the bail tight against the handle, the spring on the lower end of the cable must begin to stretch, and lengthen about an 1/8" to 1/4". This ensures that the spring pressure is being applied to the belt to make it run without slipping. If you need to adjust the cable, loosen the tightening nuts on the handle bracket and lengthen or shorten the cable until the proper adjustment is obtained, then retighten the nuts. Reinstall the belt shield.

C18 COMPACT COMBER

Item	Part No.	Description
1	54001	Handle Assy - includes handle, bail, clutch cable, S-hook and handle grip, eye bolt and nut
2	54002	Clutch Cable Assy - includes clutch cable and S-Hook
3	54003	Bail
4	54004	Knob, Folding Handle Kit - includes knob, washer and bolt
5	54005	Lower Handle Assy - Includes folding handle mount, 5/16 - 18 x 1 3/4" hex head bolt, 5/16" internal lock washer and 5/16 - 18 hex nut
6	5140	Belt Keeper Kit - includes belt keeper, 5/16" washer, 5/16 - 18 hex lock nut, 5/16 - 18 x 3/4" carriage bolt
7	54006	Belt Guard Kit - includes shield, 3/8" internal lock washer and 3/8 - 16 acorn nut
8	54058	Deflector Kit - includes deflector strap, 1/4 - 20 x 3/4" slotted round screw (4 ea), 1/4 - 20 hex keps nut (4 ea)
9	5161	Deflector, neoprene
10	54007	Depth Lever Assy - includes height adjustment link (2 ea), adjustment lever, 5/16 - 18 x 1 1/4" hex head bolt (2 ea), 5/16 - 18 x 1 1/2" hex head bolt, 5/16" flat washer (6 ea), 5/16 - 18 hex lock nut (3 ea)
11	5027	Idler Assy Kit - includes 2 3/4" idler pulley , clutch spring, idler arm, idler tab, 3/8" washer, 3/8 - 16 hex jam nut, 3/8 - 16 hex lock nut, 3/18 - 16 x 4" hex screw
12	0343	Pulley, idler 2 3/4" OD
13	5121	Mounting Arm, idler pulley
14	5129	Spring, Clutch rod
15	54008	Depth Adjustment Knob
16	54009	3-pronged lock depth knob
17	54010	Rotor guard
18	5051	Wheel, 8" x 1 3/4", ball bearing
19	54011	Bolt kit for wheel - includes 1/2 - 13 x 3 1/4" hex bolt, 1/2" washer (2 ea), 1/2 - 13 hex jam nut (2 ea), 1/2" lock washer (1ea)
20	54012	Lift Arm Rod Kit - includes 1/4" cotter pin, 3/8" washer, plated rod
21	54013	Lift Arm Assy Kit - includes lift arm weldment, torsion spring
22	54014	Torsion spring
23	0315	Bearing, 3/4" with locking collar
24	5185	Stamping kit - includes 5/16 - 18 hex nut (2 ea), 5/16 - 18 x 3/4" carriage bolt (2 ea), bearing flanges (2 ea), 5/16" lockwashers (2 ea)
25	5005	Rotor cap, 3/4" ID
26	54015	V-Pulley, B-5.0" OD, tapered bore.
27	54016	Bushing kit - includes bushing 3/4" bore with screws, 3/16" square key
28	54017	V-Belt, B-33", special
29	54019	V-Pulley engine kit for 3/4" bore - includes V-pulley 2 1/2" OD x 3/4" bore, 3/16" square key
30	54021	Engine Bolt Kit - includes 5/16 - 18 x 1 1/2" carriage bolt (4 ea), 5/16" washer (8 ea), 5/16 - 18 hex lock nut (4 ea)
31	54022	Deck, C18
32	54052	Kit, Decal C18 comber

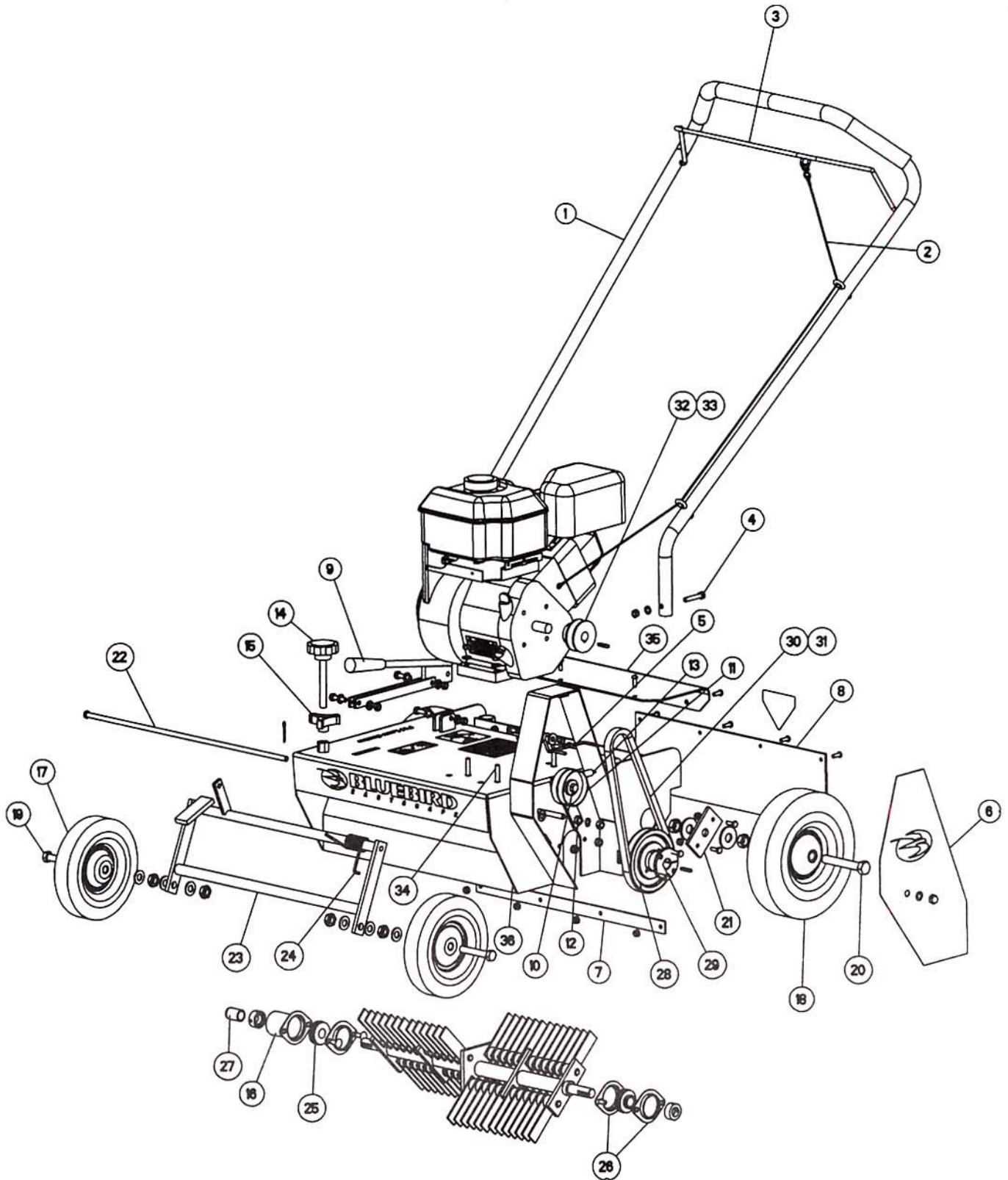
To order Flail blade assembly or parts, please see page 23

To order Delta blade assembly or parts, please see page 24

To order Spring Tine assembly or parts, please see page 25

Replacement Parts List

P18 Lawn Comber



P18 COMBER

Item	Part No.	Description
1	54023	Handle Assy - includes handle, bail, clutch cable, S-hook and handle grip.
2	54024	Clutch Cable Assy - includes clutch cable and S-hook
3	54003	Bail
4	5167	Bolt Kit, handle - includes 5/16-18 x 1 3/4" hex cap screw (2 ea), 5/16-18 hex nut (2 ea)
5	5140	Belt Keeper Kit - includes belt keeper, 5/16" washer, 5/16 - 18 hex lock nut, 5/16 - 18 x 3/4" carriage bolt
6	54025	Belt Guard Kit - includes shield, 3/8" internal lock washer and 3/8 - 16 acorn nut
7	54058	Deflector Kit - includes deflector strap, 1/4 - 20 x 3/4" slotted round screw (4 ea), 1/4 - 20 hex keps nut (4 ea)
8	5161	Deflector, neoprene
9	54007	Depth Lever Assy - includes height adjustment link (2 ea), adjustment lever, 5/16 - 18 x 1 1/4" hex head bolt (2 ea), 5/16 - 18 x 1 1/2" hex head bolt, 5/16" flat washer (6 ea), 5/16-18 hex lock nut (3 ea)
10	5027	Idler Assy Kit - includes 2 3/4" idler pulley, clutch spring, idler arm, idler tab, 3/8" washer, 3/8 - 16 hex jam nut, 3/8 - 16 hex lock nut, 3/18 - 16 x 4" hex screw.
11	0343	Pulley, idler 2 3/4" OD
12	5121	Mounting Arm, idler pulley
13	5129	Spring, Clutch rod
14	54008	Depth Adjustment Knob
15	54009	3-pronged lock depth knob
16	54010	Rotor guard
17	5051	Front wheel, 8" x 1 3/4", ball bearing
18	5053	Rear wheel, 10" x 2 3/4", ball bearing
19	54011	Bolt kit for front wheel - includes 1/2 - 13 x 3 1/4" hex bolt, 1/2" washer (2 ea), 1/2 - 13 hex jam nut (2 ea), 1/2" lock washer (1ea)
20	54026	Bolt kit for rear wheel - includes 5/8 - 11 x 4" hex bolts, 5/8 - 11 hex jam nut (2 ea), 5/8" flat washer (2 ea)
21	54027	Wheel plate kit - includes wheel plate, 1/4 - 20 x 3/4 hex bolt (2 ea) and 1/4-20 hex keps nut (2ea)
22	54012	Lift Arm Rod Kit - includes 1/4" cotter pin, 3/8" washer, plated rod
23	54028	Lift Arm Assy Kit - includes lift arm weldment, torsion spring
24	54014	Torsion spring
25	0315	Bearing, 3/4" with locking collar
26	5185	Stamping kit - includes 5/16 - 18 hex nut (2 ea), 5/16 - 18 x 3/4" carriage bolt (2 ea), bearing flanges (2 ea), 5/16" lockwashers (2 ea)
27	5005	Rotor cap, 3/4" ID
28	54015	V-Pulley, B-5.0" OD, Tapered Bore
29	54016	Bushing kit - includes bushing 3/4" bore with screws, 3/16" square key
30	54018	V-Belt, B-34", special
31	0339	V-Belt, B-36" special (used for 8hp engine only)
32	54019	V-Pulley engine kit for 3/4" bore - includes V-pulley 2 1/2" OD x 3/4" bore, 3/16" square key
33	54020	V-Pulley engine kit for 1" bore - includes V-pulley 2 1/2 OD x 1" bore, 1/4" square key (used for 8hp engine only)
34	54021	Engine Bolt Kit - includes 5/16 - 18 x 1 1/2" carriage bolt (4 ea), 5/16" washer (8 ea), 5/16 - 18 hex lock nut (4 ea)
35	54029	Deck Cover Kit, P18 - includes cover, 1/4 - 20 x 3/4" slotted round screw (6 ea)
36	54030	Deck, P18
37	54053	Kit, Decal P18 comber

To order Flail blade assembly or parts, please see page 23
 To order Delta blade assembly or parts, please see page 24

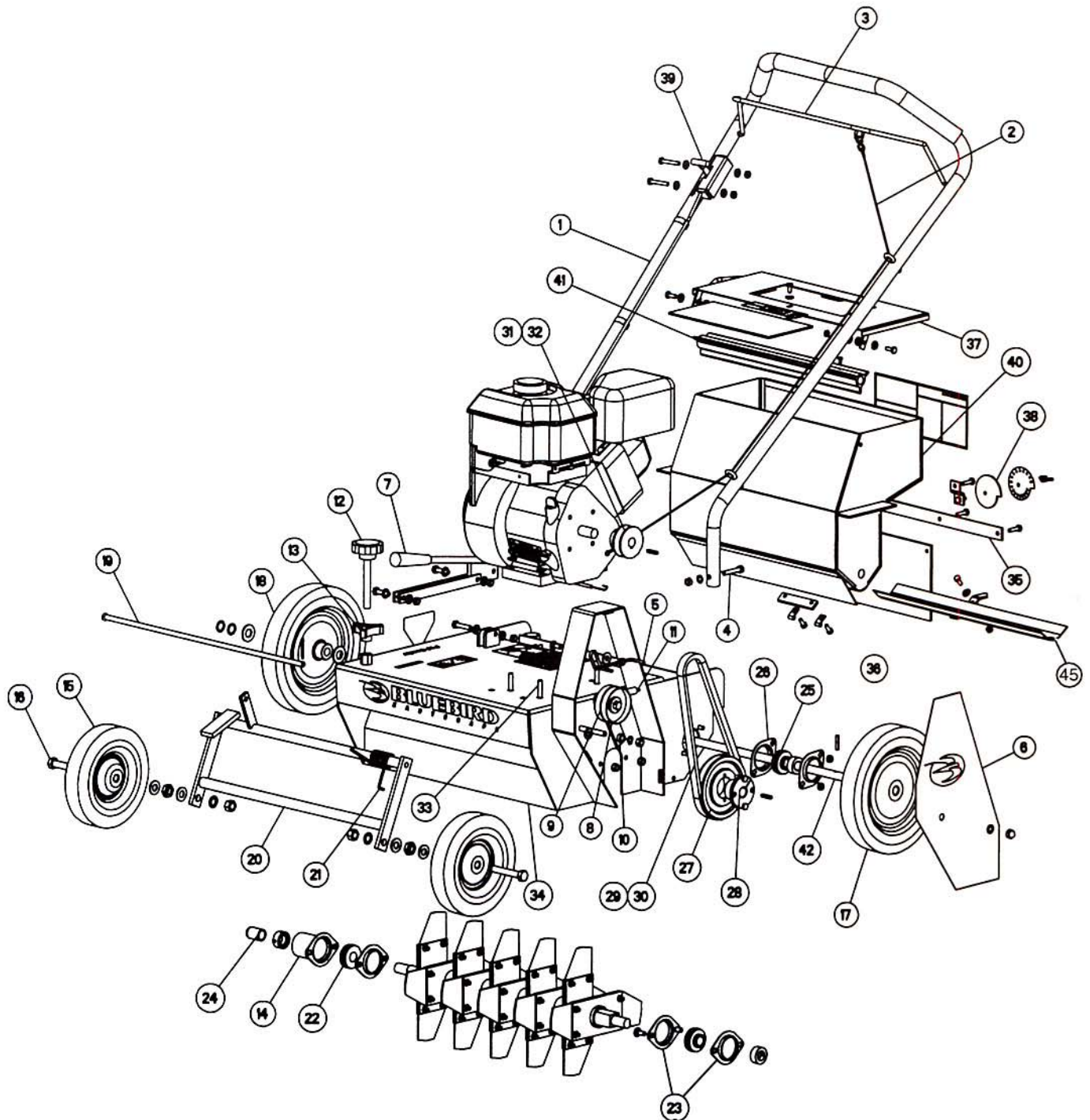
P18 Lawn Comber with Bagger



P18 COMBER WITH BAGGER

Item	Part No.	Description
1	54023	Handle Assy - includes handle, bail, clutch cable, S-hook and handle grip.
2	54024	Clutch Cable Assy - includes clutch cable and S-hook
3	54003	Bail
4	5167	Bolt Kit, handle - includes 5/16-18 x 1 3/4" hex cap screw (2 ea), 5/16-18 hex nut (2 ea)
5	5140	Belt Keeper Kit - includes belt keeper, 5/16" washer, 5/16 - 18 hex lock nut, 5/16 - 18 x 3/4" carriage bolt
6	54025	Belt Guard Kit - includes shield, 3/8" internal lock washer and 3/8 - 16 acorn nut
7	54007	Depth Lever Assy - includes height adjustment link (2 ea), adjustment lever, 5/16 - 18 x 1 1/4" hex head bolt (2 ea), 5/16 - 18 x 1 1/2" hex head bolt, 5/16" flat washer (6 ea), 5/16 - 18 hex lock nut (3 ea)
8	5027	Idler Assy Kit - includes 2 3/4" idler pulley, clutch spring, idler arm, idler tab, 3/8" washer, 3/8 - 16 hex jam nut, 3/8 - 16 hex lock nut, 3/18 - 16 x 4" hex screw.
9	0343	Pulley, idler 2 3/4" OD
10	5121	Mounting Arm, idler pulley
11	5129	Spring, Clutch rod
12	54008	Depth Adjustment Knob
13	54009	3-pronged lock depth knob
14	54010	Rotor guard
15	5051	Front wheel, 8" x 1 3/4", ball bearing
16	5053	Rear wheel, 10" x 2 3/4", ball bearing
17	54011	Bolt kit for front wheel - includes 1/2 - 13 x 3 1/4" hex bolt, 1/2" washer (2 ea), 1/2 - 13 hex jam nut (2 ea), 1/2" lock washer (1 ea)
18	54026	Bolt kit for rear wheel - includes 5/8 - 11 x 4" hex bolts, 5/8 - 11 hex jam nut (2 ea), 5/8 flat washer (2 ea)
19	54031	Wheel plate kit - includes wheel plate and 1/4 - 20 x 3/4 hex bolt (2 ea), 1/4 - 20 hex keps nut (2 ea)
20	54012	Lift Arm Rod Kit - includes 1/4" cotter pin, 3/8" washer, plated rod
21	54028	Lift Arm Assy Kit - includes lift arm weldment, torsion spring
22	54014	Torsion spring
23	0315	Bearing, 3/4" with locking collar
24	5185	Stamping kit - includes 5/16 - 18 hex nut (2 ea), 5/16 - 18 x 3/4" carriage bolt (2 ea), bearing flanges (2 ea), 5/16" lockwashers (2 ea)
25	5005	Rotor cap, 3/4" ID
26	54015	V-Pulley, B-5.0" OD, Tapered Bore
27	54016	Bushing kit - includes bushing 3/4" bore with screws, 3/16" square key
28	54018	V-Belt, B- 34" special
29	0339	V-Belt, B- 36" special (used for 8hp engine only)
30	54019	V-Pulley engine kit for 3/4" bore - includes V-pulley 2 1/2" OD x 3/4" bore, 3/16" square key
31	54020	V-Pulley engine kit for 1" bore - includes V-pulley 2 1/2 OD x 1" bore, 1/4" square key (used for 8hp engine only)
32	54021	Engine Bolt Kit - includes 5/16 - 18 x 1 1/2" carriage bolt (4 ea), 5/16" washer (8 ea), 5/16 - 18 hex lock nut (4 ea)
33	54030	Deck, P18
34	54034	Bagger platform kit - includes platform, casters (2 ea)
35	54035	Neoprene deflector 3/16" x 20.5"
36	54036	Chute kit - includes 3/16" x 20.5" neoprene deflector, chute mounting strap, 1/4 - 20 x 5/8" hex screw (2 ea), 1/4 - 20 hex keps nut (4 ea)
37	54037	Chute weldment kit - includes chute weldment, 1/4-20 x 3/4" round slotted screw (3 ea) and 1/4 - 20 hex keps nut (3 ea)
38	54038	Bagger frame
39	5464	Catcher Bag
40	7000	Bagger Conversion Kit - includes bagger frame, catcher bag, chute weldment and hardware, neoprene deflector, mounting tab and hardware, bagger platform, casters
41	54054	Kit, Decal P18 Bagger

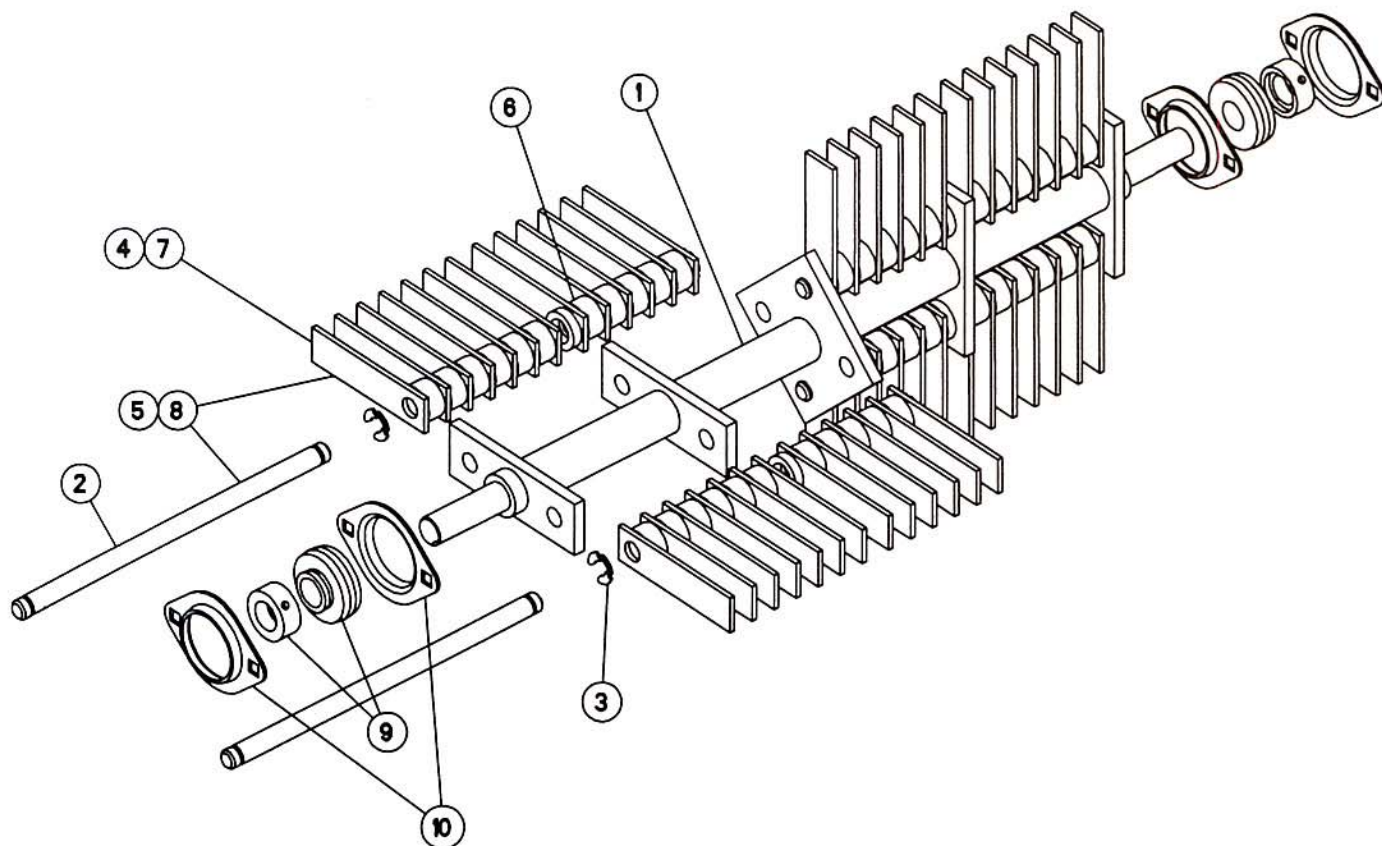
To order Flail blade assembly or parts, please see page 23



P18 SEEDER

Item	Part No.	Description
1	54057	Seeder Handle Assy - includes handle, bail, clutch cable, S-hook and handle grip.
2	54024	Clutch Cable Assy - includes clutch cable and S-hook
3	54003	Bail
4	5167	Bolt Kit, handle - includes 5/16-18 x 1 3/4" hex cap screw (2 ea), 5/16-18 hex nut (2 ea)
5	5140	Belt Keeper Kit - includes belt keeper, 5/16" washer, 5/16 - 18 hex lock nut, 5/16 - 18 x 3/4" carriage bolt
6	54025	Belt Guard Kit - includes shield, 3/8" internal lock washer and 3/8 - 16 acorn nut
7	54007	Depth Lever Assy - includes height adjustment link (2 ea), adjustment lever, 5/16 - 18 x 1 1/4" hex head bolt (2 ea), 5/16- 18 x 1 1/2" hex head bolt, 5/16" flat washer (6 ea), 5/16 -18 hex lock nut (3 ea)
8	5027	Idler Assy Kit - includes 2 3/4" idler pulley, clutch spring, idler arm, idler tab, 3/8" washer, 3/8 - 16 hex jam nut, 3/8 - 16 hex lock nut, 3/18 - 16 x 4" hex screw.
9	0343	Pulley, idler 2 3/4" OD
10	5121	Mounting Arm, idler pulley
11	5129	Spring, Clutch rod
12	54008	Depth Adjustment Knob
13	54009	3-pronged lock depth knob
14	54010	Rotor guard
15	5051	Wheel, front , 8" x 1 3/4", ball bearing (2 ea)
16	54011	Bolt kit for front wheel - includes 1/2 - 13 x 3 1/4" hex bolt, 1/2" washer (2 ea), 1/2 - 13 hex jam nut (2 ea), 1/2" lock washer (1 ea)
17	54041	Wheel, left rear kit - includes 10" x 1.75" wheel 5/8" bore smooth, 1/4" x 1 1/8" roll pin
18	54042	Wheel, right rear kit - includes 10" x 1.75" wheel 5/8" bore bearing, 5/8" external self-locking retaining ring (2 ea)
19	54012	Lift Arm Rod Kit - includes 1/4" cotter pin, 3/8" washer, plated rod
20	54028	Lift Arm Assy Kit - includes lift arm weldment, torsion spring
21	54014	Torsion spring
22	0315	Bearing, 3/4" with locking collar
23	5185	Stamping kit - includes 5/16 - 18 hex nut (2 ea), 5/16 - 18 x 3/4" carriage bolt (2 ea), bearing flanges (2 ea), 5/16" lockwashers (2 ea)
24	5005	Rotor cap, 3/4" ID
25	9127	Bearing, 5/8" with locking collar
26	54049	Stamping kit - 1/4 -20 hex nut (2 ea), 1/4 -20 x 3/4" carriage bolt (2 ea), bearing flanges (2 ea)
27	54015	V-Pulley, B-5.0" OD, Tapered Bore
28	54016	Bushing kit - includes bushing 3/4" bore with screws, 3/16" square key
29	54018	V-Belt, B-34", special
30	0339	V-Belt, B-36", special (used for 8hp engine only)
31	54019	V-Pulley engine kit for 3/4" bore - includes V-pulley 2 1/2" OD x 3/4" bore, 3/16" square key
32	54020	V-Pulley engine kit for 1" bore - includes V-pulley 2 1/2 OD x 1" bore, 1/4" square key (used for 8hp engine only)
33	54021	Engine Bolt Kit - includes 5/16 - 18 x 1 1/2" carriage bolt (4 ea), 5/16" washer (8 ea), 5/16 - 18 hex lock nut (4 ea)
34	54030	Deck, P18
35	54058	Deflector Kit - includes deflector strap, 1/4 - 20 x 3/4" slotted round screw (4 ea), 1/4 - 20 hex keps nut (4 ea)
36	54059	Deflector, neoprene for seeder
37	54043	Lid, seed hopper kit - includes lid, window and hardware
38	54044	Dial, gage kit - includes dial, bracket and hardware.
39	54045	Control, Push/Pull kit - includes Push/Pull control, control mount plate, bracket (2 ea), and hardware
40	54046	Seed hopper
41	54047	Agitator bar, includes agitator, self-tapping screw
42	54048	Axle, 5/8" shaft, seeder
43	6900	Seeder Conversion Kit - Includes hopper, agitator, seeder control, and hardware.
44	54055	Kit, Decal P18 Seeder
45	54062	Kit, Gate P18 Seeder

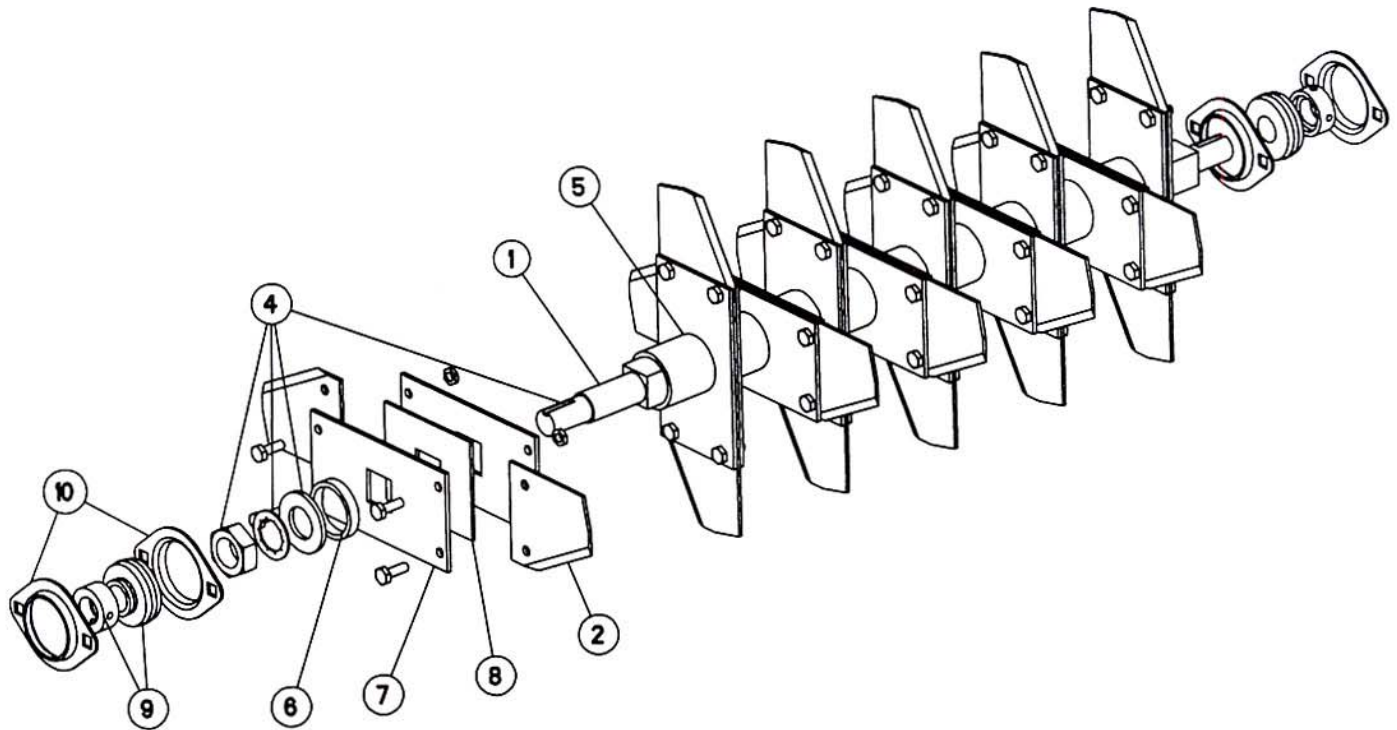
Flail Blade Reel



ITEM	DESCRIPTION	PART NUMBER	
		C-18	P-18
1	Rotor, Flail Assy. (does not include blades, bearings, or shafts)	5170	5170
	Rotor, Flail Assy, Complete w/o bearings	5275	5175
	Rotor, Flail Assy., Complete w/Blades & Bearings	5280	5180
2	Shaft set, 4 ea w/ C-clips	5002	5002
3	Retaining Clip	0351	0351
4	Blade set (52 ea), 1/8" x 3 1/2"	5201	—
5	Blade and Shaft set (5201 & 5002)	5203	—
6	Spacer set, rubber (48 ea)	5004	5004
7	Blade Set (52 ea), 1/8" x 4"	—	5001
8	Blade and Shaft Set (5001 & 5002)	—	5003
9	Bearing, 3/4" with Locking Collar	0315	0315
10	Stamping Kit – Includes Flanges & Hardware	5185	5185

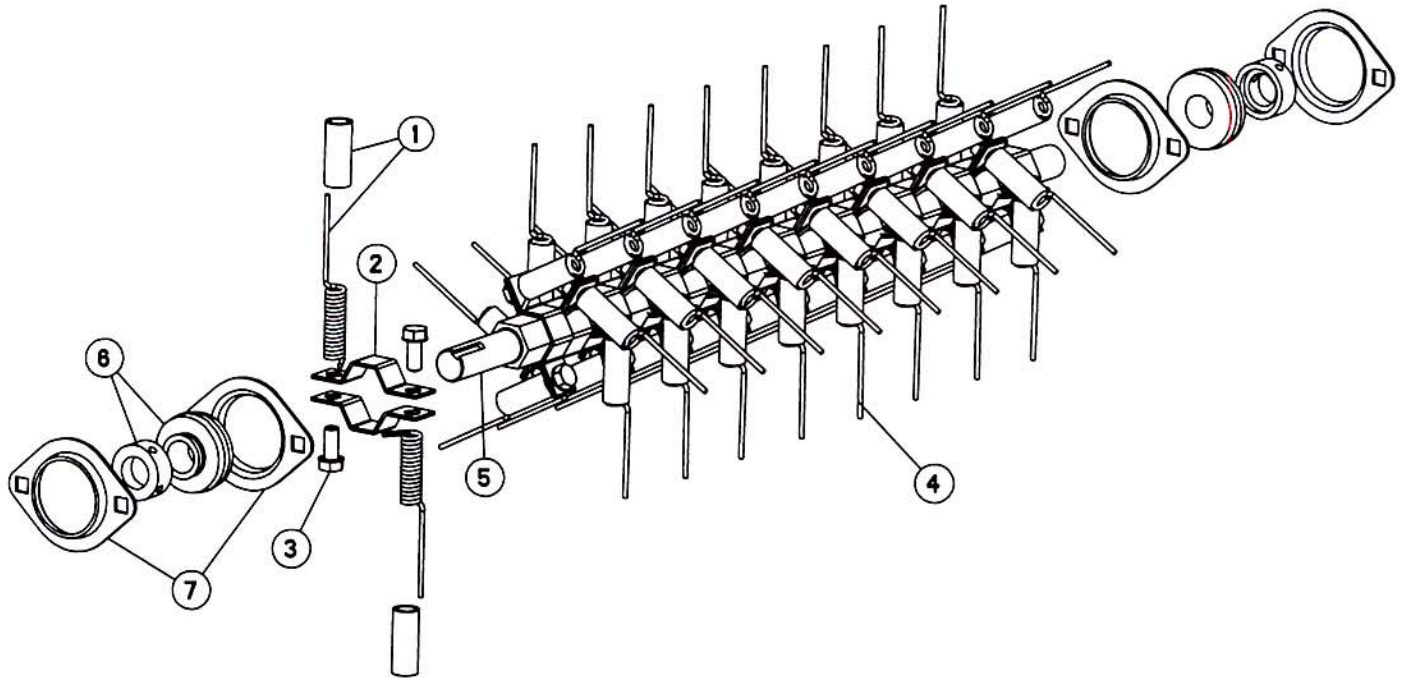
Delta Blade Reel

When blades no longer penetrate surface, replace blades



ITEM	DESCRIPTION	PART NUMBER	
		C-18	P-18
1	Delta Reel Assy., w/o Blades or Hardware	5249	5049
	Delta Reel Assy., Complete w/o Bearings	5920	5940
	Delta Reel Assy., Complete w/Blades & Bearings	5922	5242
2	Blade set, Delta (20 ea)	5970	5970
3	Bolt kit, blade (40 ea)	5075	5075
4	Shaft, Delta Reel w/nut & washers	5061	5061
5	Spacer, carrier, steel tube (1 ea)	5064	5064
6	End ring, steel (1 ea)	5065	5065
7	Plate, blade carrier (1 ea)	5268	5062
8	Plate, blade spacer (1 ea)	5269	5063
9	Bearing, 3/4" with Locking Collar	0315	0315
10	Stamping Kit – Includes Flanges & Hardware	5185	5185

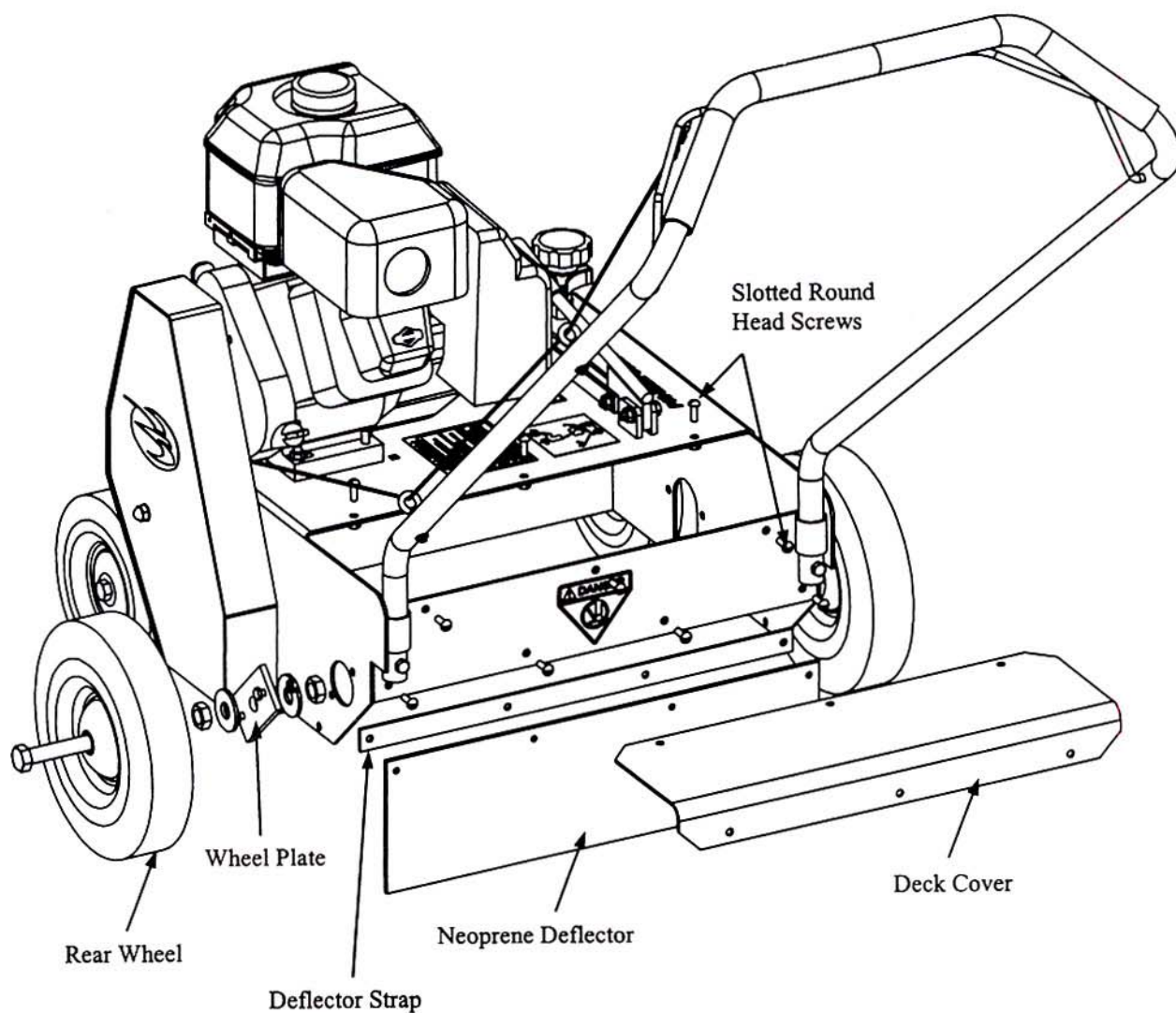
Spring Tine Reel



- Spring tines can be replaced without removing the reel assembly.
- Replacement requires 1/2" socket.
- This reel is only used on the C18 comber.

ITEM	PART NO.	DESCRIPTION
1	ER91010	Spring Tine w/ Sleeve (orders in increments of 100 are preferred)
2	ER91011	Clamp, Tine (orders in increments of 100 are preferred)
3	ER91012	Screw for Tine (orders in increments of 100 are preferred)
4	54050	Tine Reel Assy, Complete w/o bearings
	54056	Tine Reel Assy, Complete w/bearings
5	54051	Shaft, Tine Reel
6	0315	Bearing, 3/4" With Locking Collar
7	5185	Stamping Kit – Includes Flanges & Hardware

P18 Catcher Bag Assembly Instructions **(P/N 7000)**



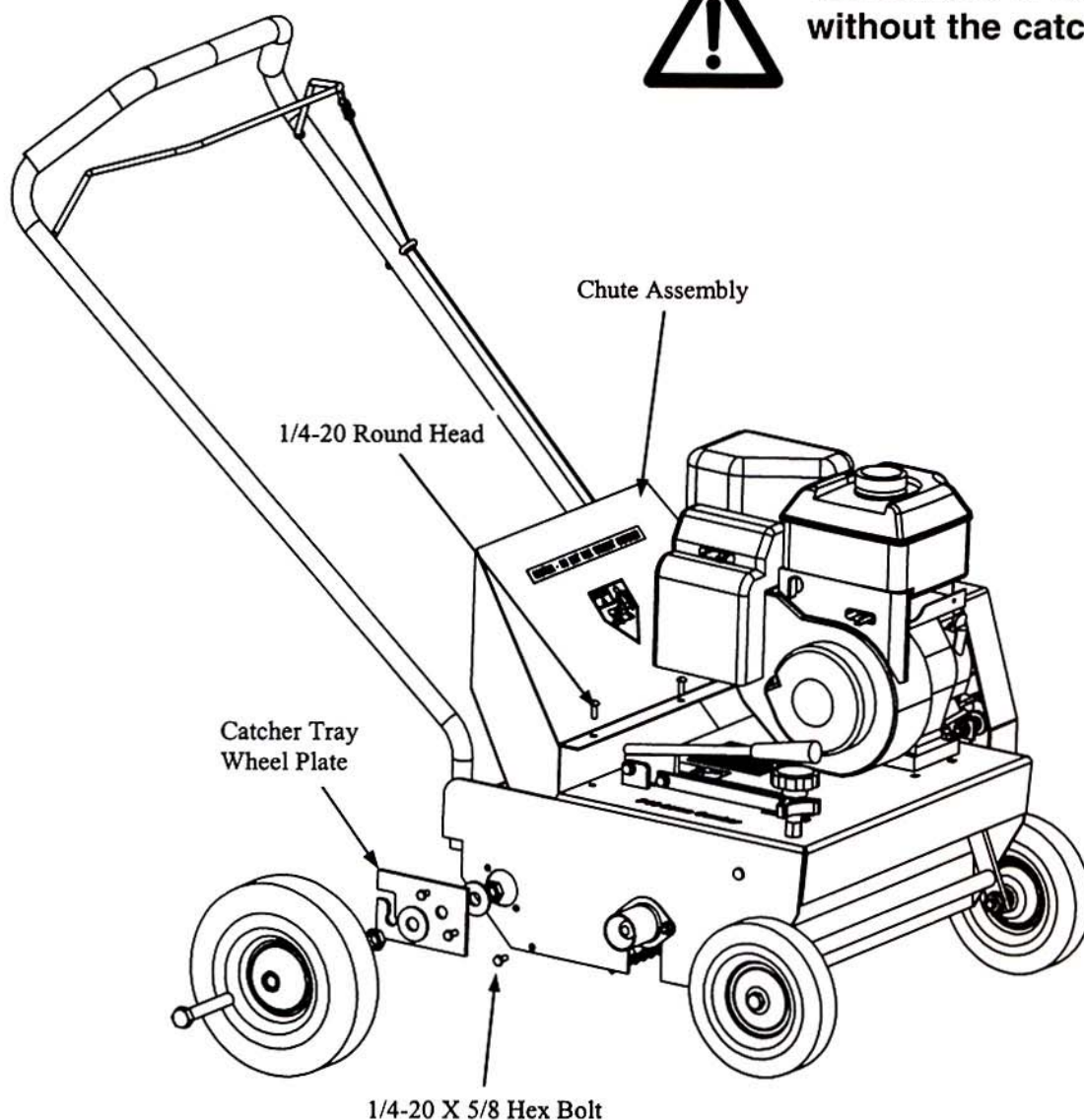
- 1** Disassemble both rear wheels, wheel plate and hardware. Remove deck cover, neoprene deflector and deflector strap by removing ten slotted round head screws.

P18 Catcher Bag Assembly Instructions

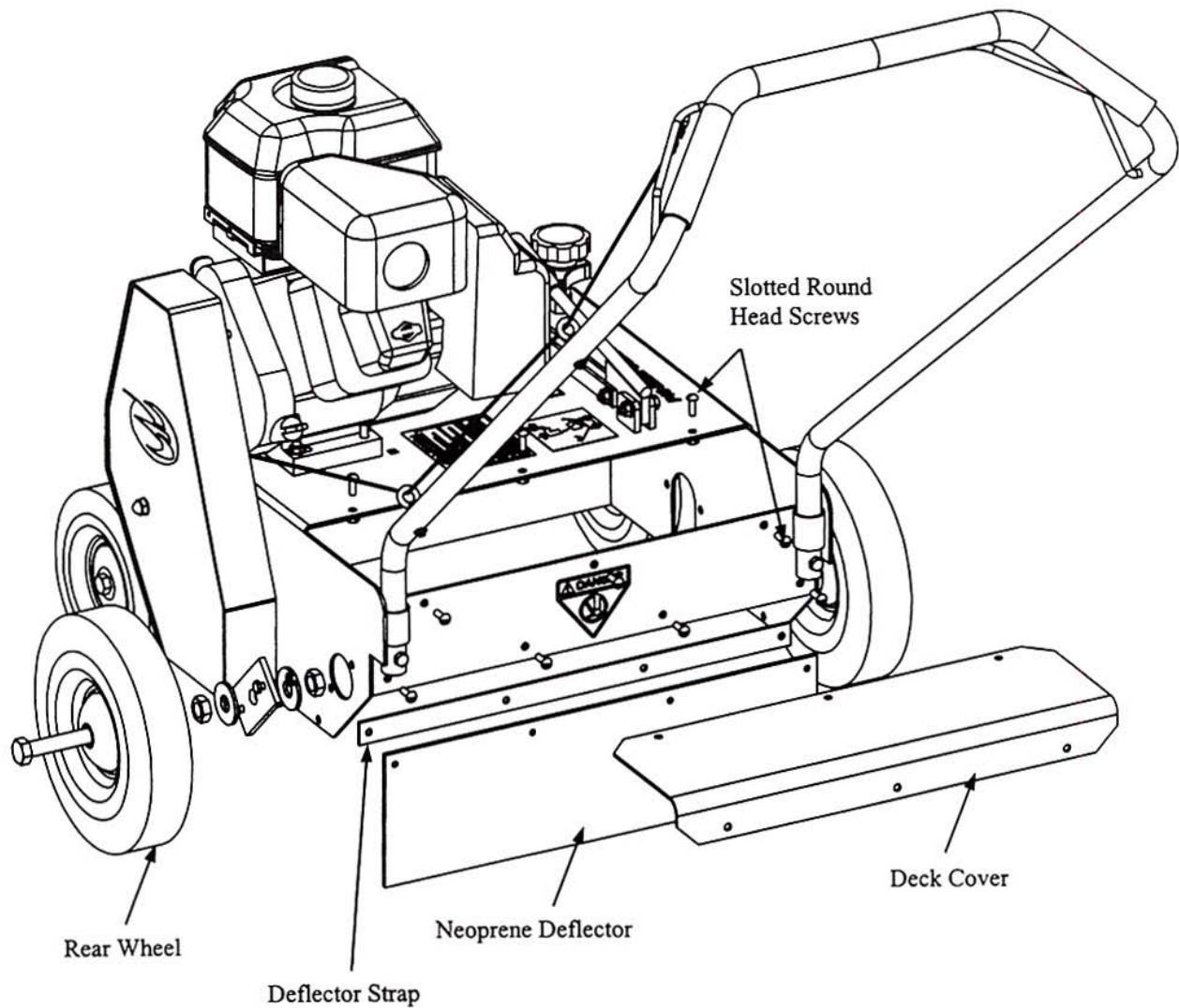
- 2**
- A) Assemble the chute assembly to the comber deck using three 1/4-20 round head screws on top and two 1/4-20 hex bolts on the side as shown below.
 - B) Re-assemble wheels using the provided catcher tray wheel plate.
 - C) Attach catcher bag tray to the comber by inserting the hooks on the tray into the catcher bag wheel plate.
 - D) Assemble the catcher bag to the bag frame using the instruction provided with the bag.



Do not use or start engine without the catcher bag attached.

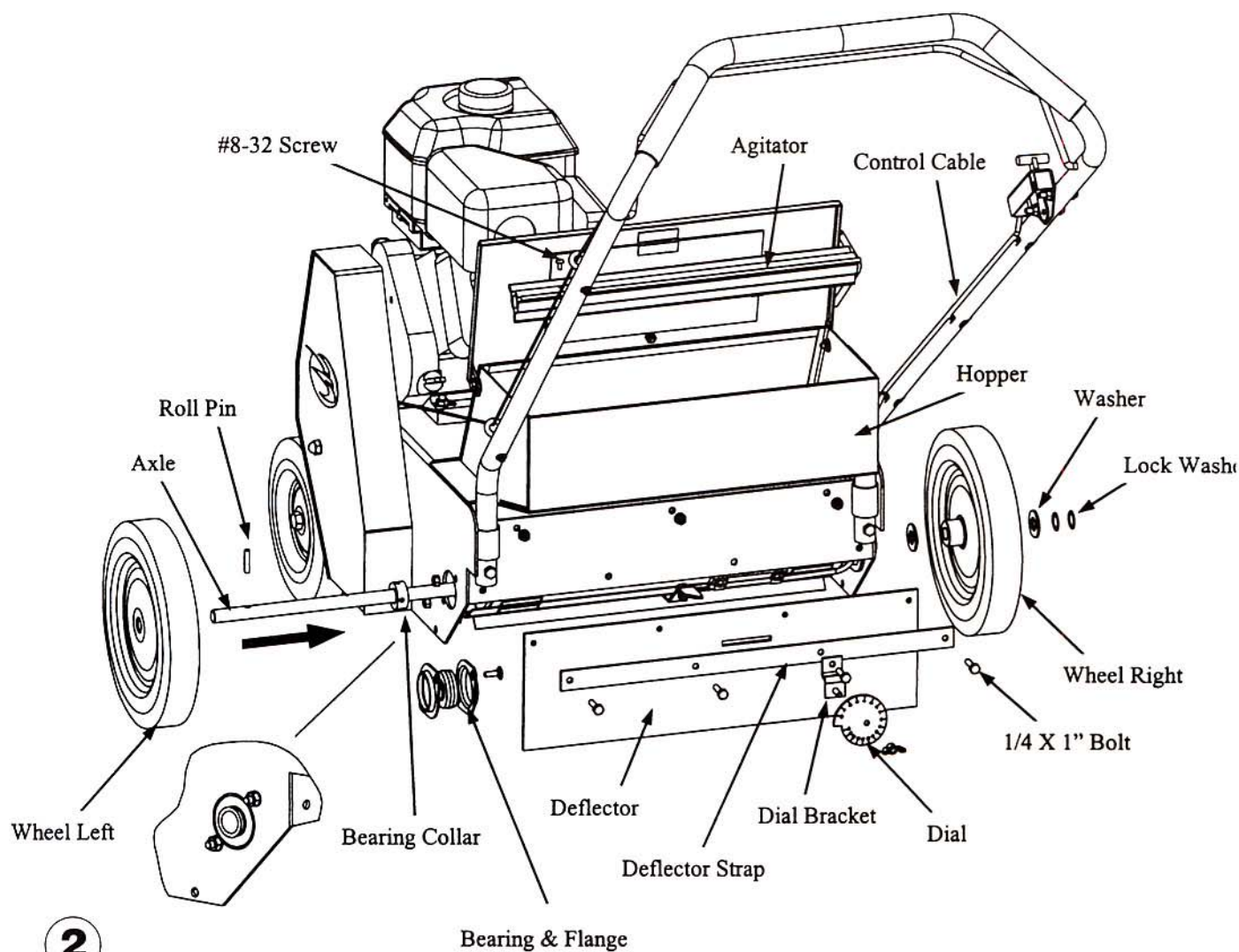


P18 Seeder Attachment Assembly Instructions (P/N 6900)



- 1** Disassemble both rear wheels, wheel plate and hardware. Remove deck cover, neoprene deflector and deflector strap by removing ten slotted round head screws.

P18 Seeder Attachment Assembly Instructions

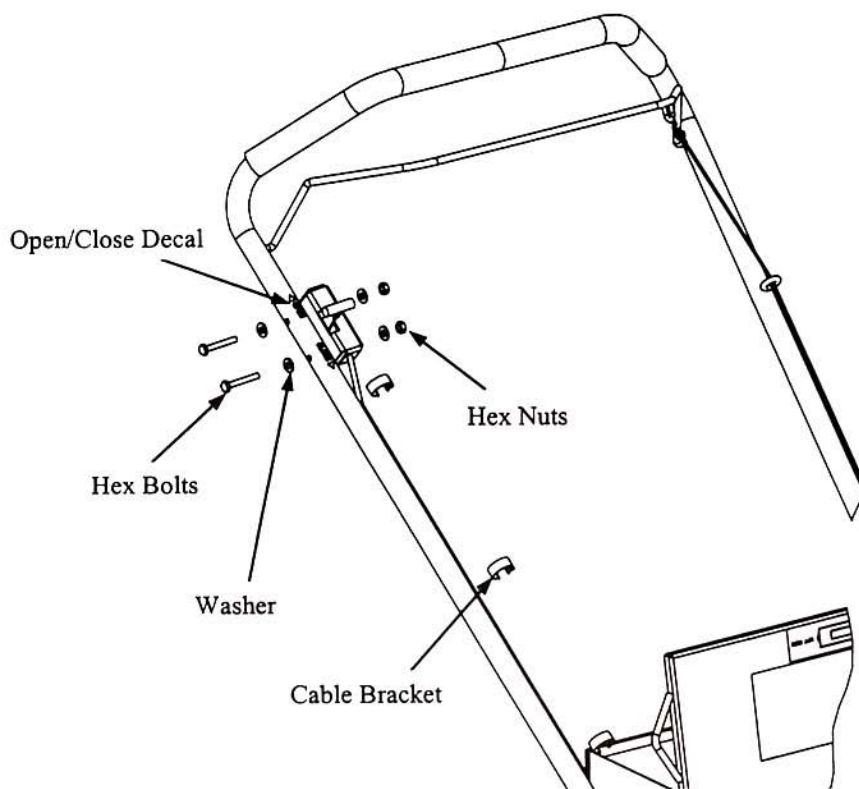
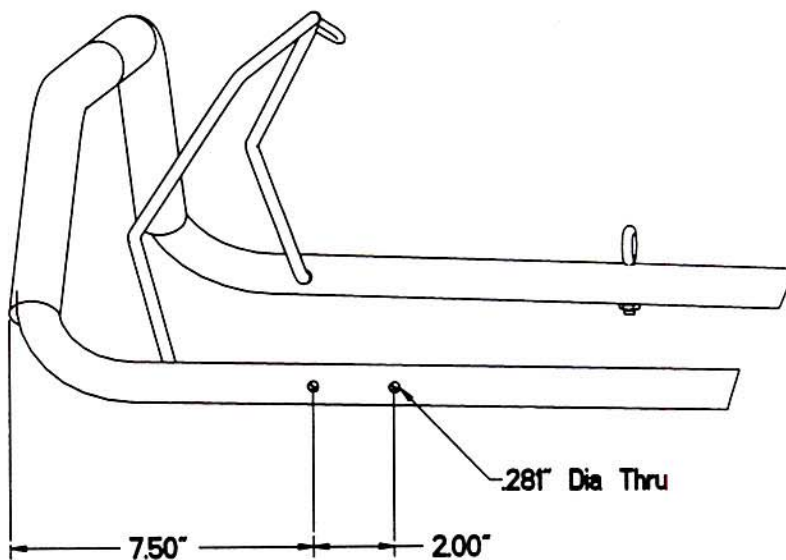


- A) Assemble bearing and bearing flanges from inside of deck as shown using 1/4" carriage bolts and nut as shown in enlarged view. Do not tighten nuts until wheel axle has been assembled.
- B) Assemble hopper, neoprene deflector, deflector strap, dial bracket and dial as shown. Use 4 each 1/4 x 1" long bolts along the deflector strap and 3 each 1/4 x 5/8" long bolts on the hopper mount above the deflector strap. Be sure that the control cable is not trapped between the hopper and the rear deck plate when assembling.
- C) Slide the axle through the bearing – hopper – agitator and out the other bearing as shown. Tighten the bearing bolts which were kept loose from step B.
- D) Attach the agitator to the axle by aligning the hole in agitator with the hole in the axle and attach using #8-32 screw.
- E) Lock each of the bearings to the shaft by using the provided bearing collar and rotating onto the bearing until it locks into place. Tighten the set screw on the bearing collar.
- F) Assemble the left wheel to the shaft using the roll pin as shown.
- G) Attach the right wheel to the shaft in the following order – Washer, Wheel, Washer and two Lock Washers.

P18 Seeder Attachment Assembly Instructions

3

Modify the handle to provide the control lever mounting to the handle by drilling two holes as shown in the illustration.



4

Attach the control lever to the handle using the 1/4" hex bolts, washers and nuts provided. Attach the cable to the handle in three places as shown using the cable brackets. Attach the Open/Close Decal next to the control lever on the handle as shown above.