

AIRREX AIR CONDITIONER

Operating Instruction & Parts Manual

Please read and save these instructions. Read carefully before attempting to assemble, install, operate or maintain the product described. Protect yourself and others by observing all safety information. Failure to comply with instructions could result in personal injury and/or property damage! Retain instructions for future reference.

- ▶ Thank you for purchasing an Airrex Portable Air Conditioner. Please read the instructions thoroughly before operating.
- ▶ After reading the instructions, please keep them in a safe place accessible to all users.
- ▶ Ensure you read the 'safety precautions' in advance and use the product correctly.
- ▶ The product is specified for use with a power supply of 115V~, 60Hz
- ▶ This manual includes the product warranty.
- ▶ Specifications and contents of this manual may be changed without prior notice, in accordance with our commitment to product quality improvement, design and control.

Description

Airrex spot coolers operate in air temperatures from 72° F to 113° F. These air conditioners utilize eco-friendly R-410A refrigerant. Airrex spot cooler air conditioners may require a fresh air supply for proper operation.

Includes removable, washable air filters for easy maintenance. Thermostatically protected compressor includes high and low pressure warnings. Moves easily on (4) swivel casters (2 locking).

Air Conditioners feature (1) 4.5" diameter front cold air discharges and a 7" diameter top warm air discharge. ETL listed.

Unpacking

After unpacking the unit, carefully inspect the unit for any damage that may have occurred during transit, such as any loose, missing, or damaged parts. If damaged, immediately file a claim with the carrier.



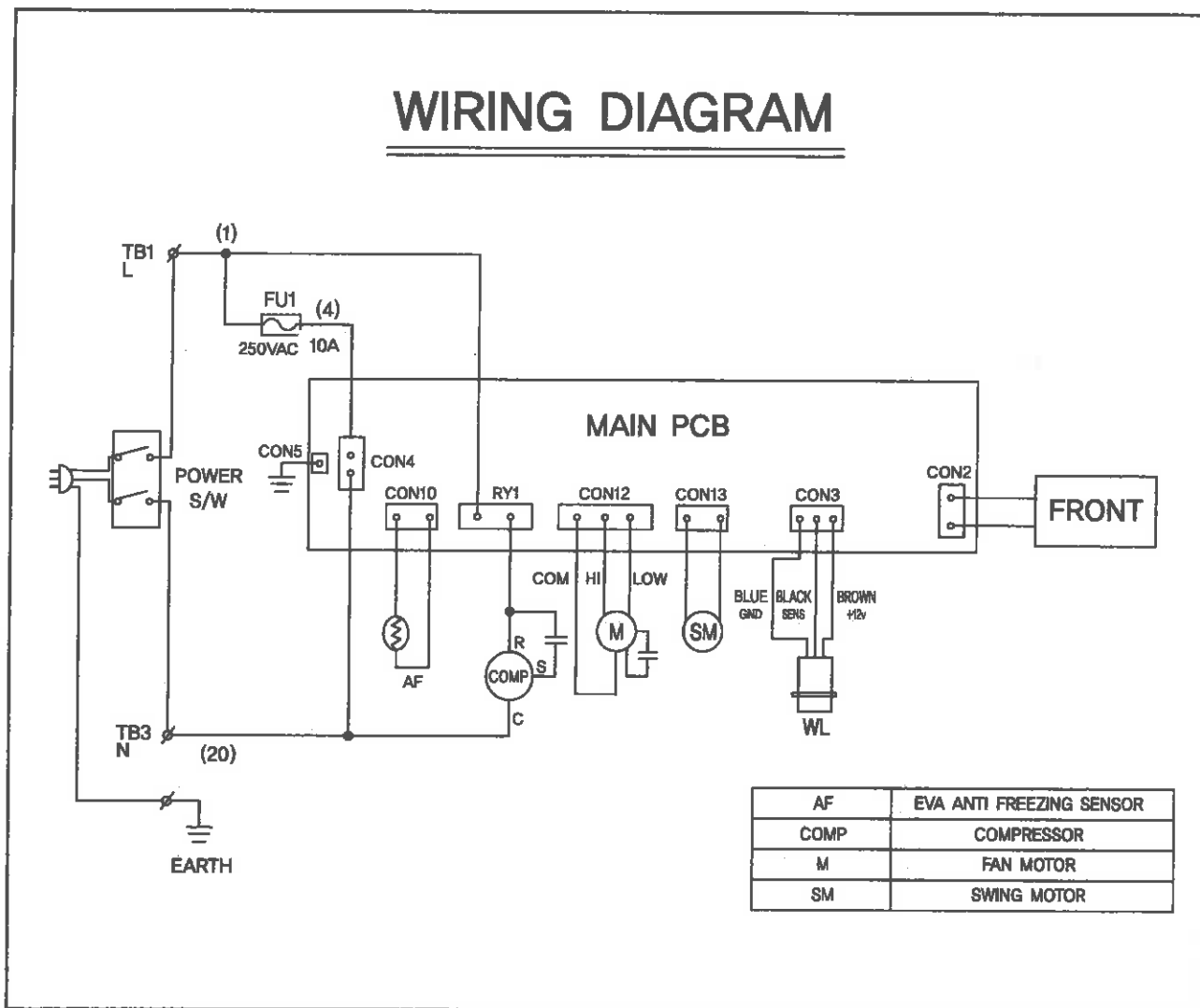
HSC-11

SPECIFICATIONS

Model		HSC-11
Cooling Capacity	BTU/h	11,000
Power Supply		115V~, 60Hz, 1Ph
Dimensions (WxDxH)	inch.	16.5 X 19 X 37
Weight	lbs	110
Velocity(CFM)		195 (Air flow Evaporator) / 283 (Air flow Condenser)
Power Consumption	kW	1.45
Current Consumption	A	12
Refrigerant	lbs	R-410A, 1.1
Drain tank	gal	1.32

MEMO.

WIRING DIAGRAM



GENERAL SAFETY INFORMATION

- * Ensure the safety of the location in which cooler is to be used.
- * Ensure you allow at least 20inch air space all around the cooler.
- * Never use the cooler at more than 2° incline.
- * Ensure the floor or ground is smooth and sound.
- * When in position LOCK the casters to prevent rolling.

FOR MAXIMUM EFFICIENCY

- * In airtight areas use vertical exhaust into ceiling.
- * If possible locate exhaust outlet through a window or door to outside.
- * Ensure correct electricity supply.

DUCT INSTALLATION

- * The duct should be established before using.

The following instructions are for ensuring the user's safety and to prevent any physical injury or material damage. Please read carefully and follow all instructions. There are two sections to these instructions: **WARNING** and **CAUTION**.



WARNING

- * Do not use with damaged power cord, plug or loose outlet. Do not use an extension cord. (risk of electric shock or fire)
- * Do not bend or crush electric cable. (risk of electric shock or fire)
- * When in use, the Air Conditioner should be on a flat surface.
- * Never remove the plug from the socket by pulling the cord. Never touch the plug with wet hands. (cause of electric shock, short circuit or ignition and /or fire)
- * Ensure both plug and socket are clean and free from dust when using.
- * Ensure you hold the power plug properly when either plugging in or unplugging.
- * Do not overload the dedicated power socket with other equipment.
- * In lightening storms, turn off the unit and disconnect it from the power supply. Also, disconnect the unit if it will not be used for long periods of time.
- * Never spray water directly onto the unit or attempt to clean it with any solvents or flammable liquids. (this could cause electric shock or fire)
- * When the unit is in operation, never spray with insecticid or combustible sprays.
- * When the unit is in use, never put fingers or foreign substances into air exit or inlet. Prevent children from putting their fingers in the unit.
- * Securely plug into a LCDI outlet. (risk of electric shock).
- * Do not place the air conditioner close to the electric outlet. (risk of fire.)
- * Never attempt to connect the unit to other electrical equipment or electric heaters.
- * Never attempt to disassemble, repair, or remodel the unit. Contact Airrex at 888-535-8841.

CAUTION

- * Use a dedicated outlet for the air conditioner to prevent fire & electric shock.
- * Prevent water from entering the inside of the air conditioner.(There is a risk of electric shock)
- * Do not use the unit for any other purposes except for controlling indoor temperatures.
- * Do not allow air flow to directly blow on people, animals, or plants. This can be harmful and have adverse effects.
- * Do not use this unit for preservation of precision instruments, foods, animals, or plants this can cause deterioration.
- * Do not place heavy objects on the product.(can cause breakdown or electrical shock and possible injury should objects fall from the machine)
- * Install the unit away from direct sunlight or other heating equipment and moisture. (Can decrease calling effect and cause electric shock.)
- * When in use, do not lean the unit more than 2°.
- * Clean and handle the unit only when unplugged from the electrical outlet and the fan has stopped. (Electric Shock)
- * For repair or service contact Airrex U.S.A at 1-888-535-8841
- * In the event of any strange sounds, burning smells or smoke from the air conditioner, turn the unit off and remove the plug from the outlet immediately. Contact Airrex U.S.A. at 1-888-535-8841.

MEMO.

OPERATION

CONTROL PANEL



① POWER ON/OFF

If you push POWER button, the fan and compressor both operate, and On Lamp is lighten.

② FAN speed control

Fan speed in on HIGH when unit is started.

To control the fan speed, push FAN button and you can select HIGH/LOW

③ Off Timer

The Off timer function can be set only when the product is On.

The set time is shown as below LED light.

1hr : ■ ● ● ●

2hr : ■ ■ ● ●

3hr : ■ ■ ■ ●

4hr : ■ ■ ■ ■

Off Timer LED lights turn off from the left one by one as time passes.

For example, the timer is set for 3 hrs, as 1 hr passes, one of the LED lights will turn off from the left to show the remainder of the time.

■ ■ ■ ●

■ ■ ● ●

(At the first time : 3hr)

(after passing 1hr)

Once the set time is complete, operation will stop.

④ Swing of Duct

If you push the SWING button, the duct for cold air moves right and left, and push the button again, it will stop

⑤ Water full

The WATER FULL light will turn on and the compressor will automatically shut off when the drain bucket is full. Remove and empty the bucket form the unit. Replace the bucket back to its original place.

PRECAUTIONS FOR INSTALLATION

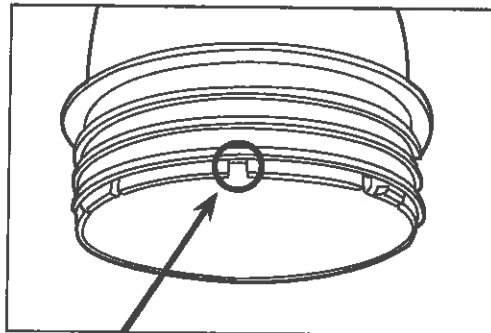
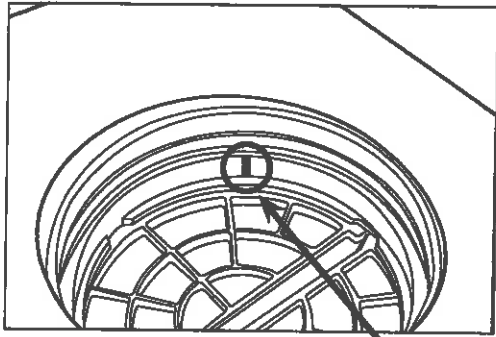
Relating to use

- Close windows or doors while operating.
- When using the air conditioner with windows or doors open, heating and cooling capacity decreases.

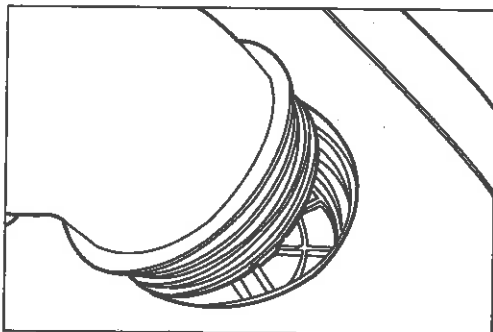
- When using the air conditioner for a long time, frequently open the window for ventilation.

1. This unit is single phase, 115V~, 60Hz. Ensure connection to a regulated and grounded power supply.
2. Use in a safe place.
3. Do not tilt the unit more than 30° or let it fall down (While operating, keep the unit level, however, in an unavoidable case, use it after fixing its gradient at less than 2°).
4. Ensure use of standard fuse.
5. Keep distance of more than 50cm (20 in) from air inlet so as not to inhibit air intake.
6. If filter or heat exchanger is covered with dust, cooling capacity decreases. Therefore, frequently clean filter or heat exchanger.
7. Use this unit indoors, and do not expose to direct sunlight.
8. Do not use this unit to deliver other heavy units or to carry people.

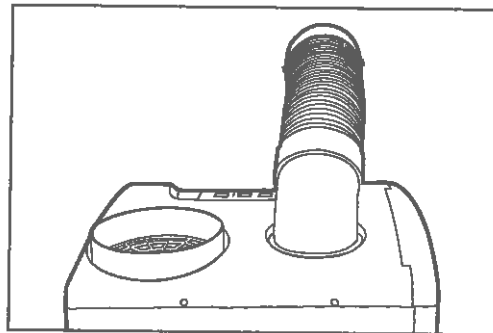
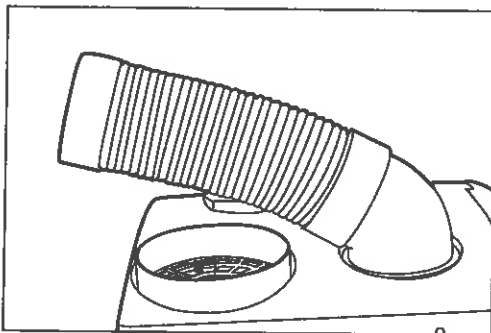
FLEXIBLE DUCT ASSEMBLY



1. Locate the mark on the top cover and the hole on the duct elbow.



2. Align the mark on the nozzle to the hole on the unit.



3. Insert the duct as shown in the picture and turn the flexible duct towards the front of the unit.

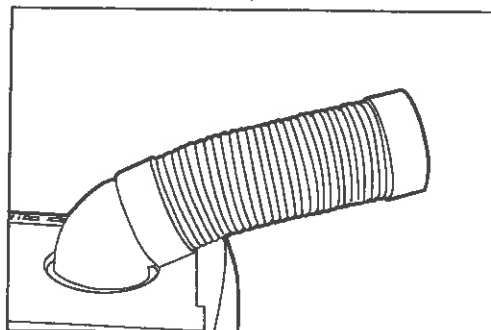
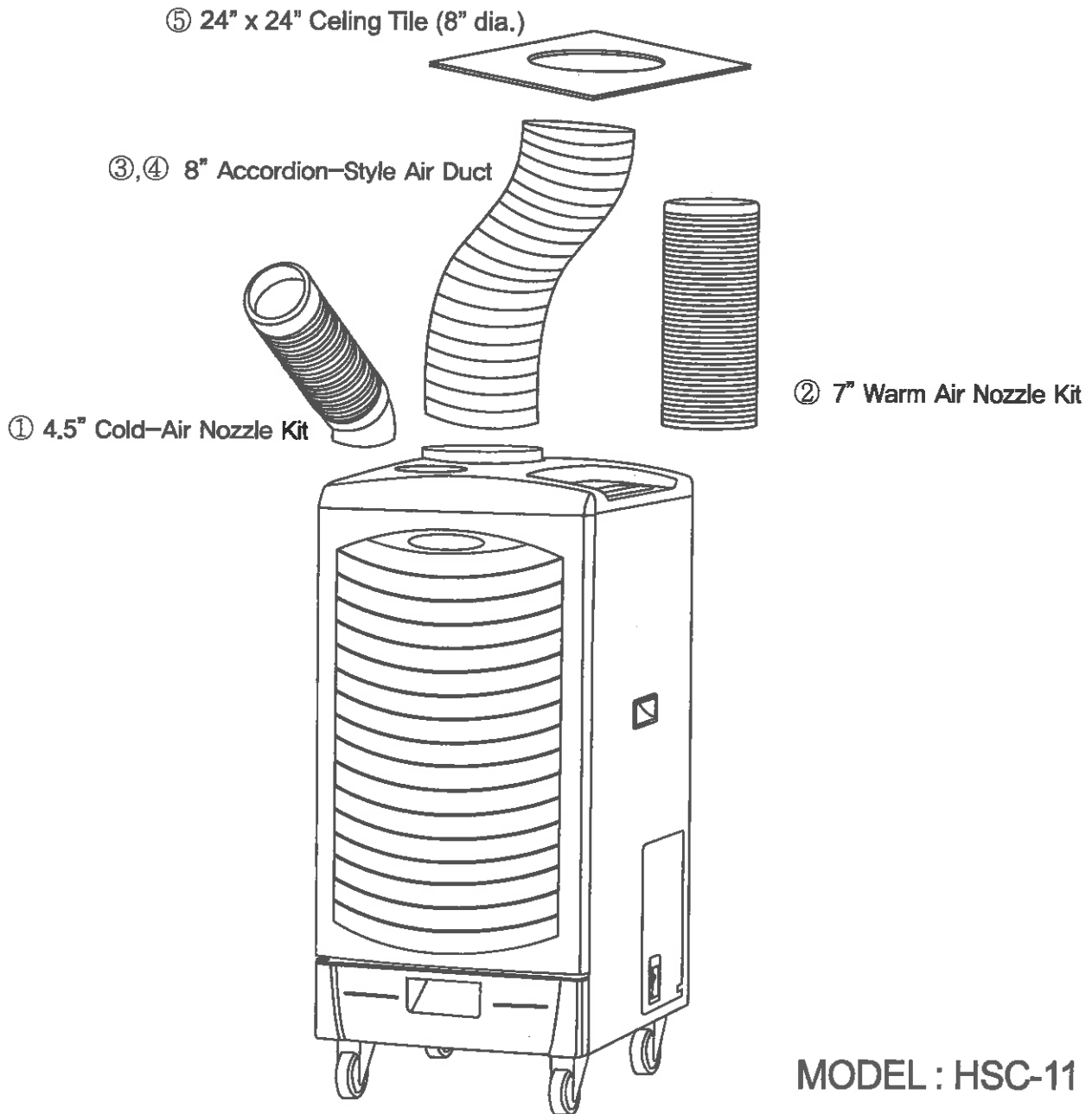
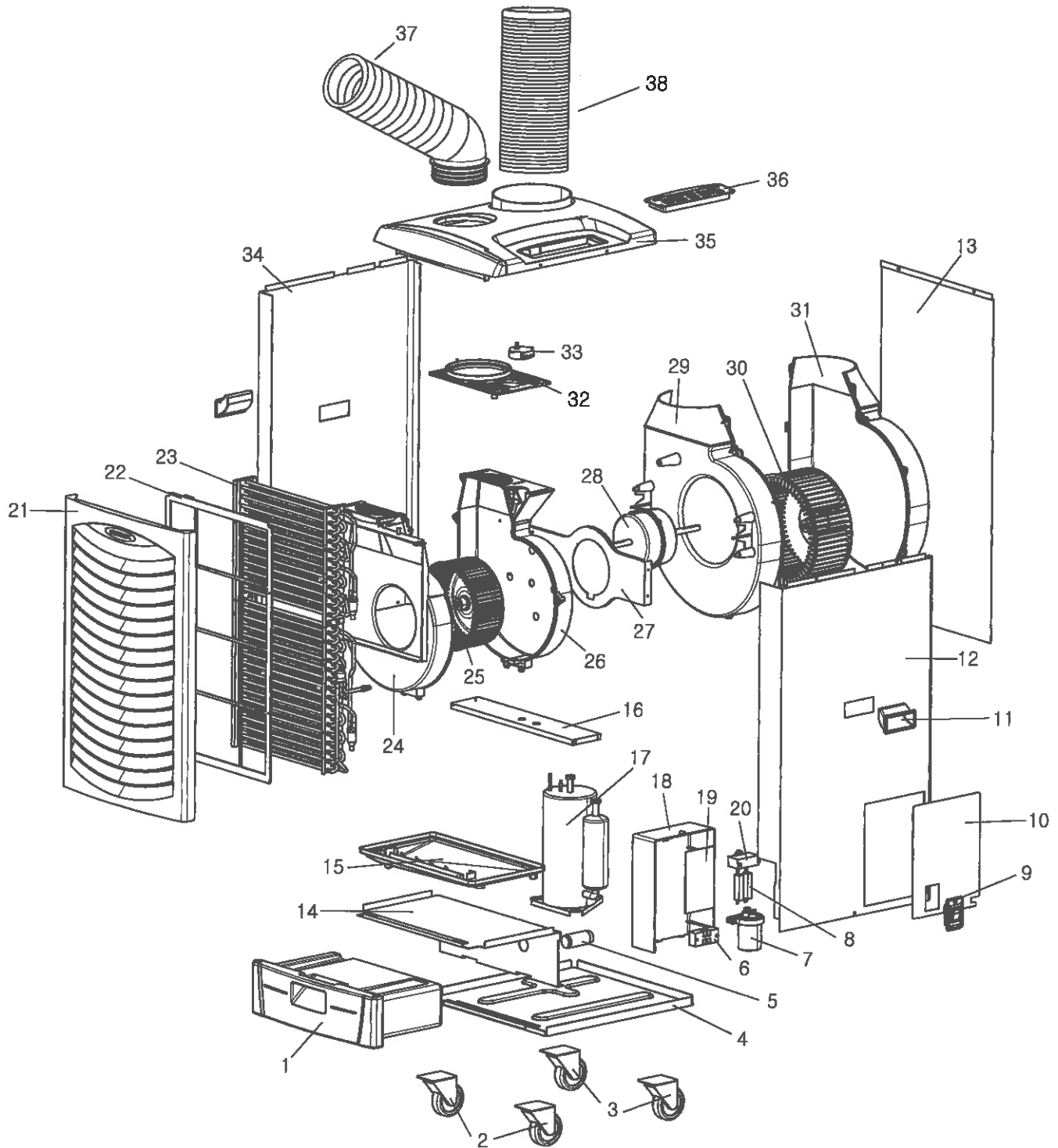


Diagram of the Unit & Accessories



No.	Part Number	Description
1	13P656	4.5" Cold-Air Nozzle Kit
2	13P657	7" Warm Air Nozzle Kit
3	13P655	8" x 10-ft. Accordion-Style Warm Air Duct
4	13C651	8" x 25-ft Accordion-Style Warm Air Duct
5	12P467	24" x 24" Ceiling Tile with 8" dia. Hole

ASSEMBLY DRAWING



Operating Instruction & Parts Manual

For service or repair parts, contact Airrex U.S.A at 1-888-535-8841

PART LIST

No.	Parts Name
1	Water Tank
2	Lockable Caster
3	Caster
4	Cabi base
5	Proximity sensor
6	Terminal Block
7	Capacitor comp
8	Fuse
9	Power Switch
10	Cabi Power Box
11	Handle
12	Cabi Right
13	Cabi back
14	Cabi water guard
15	Drain Panel
16	Cabi Blower Mounter
17	Compressor
18	Power Box
19	Main Control Board
20	Capacitor motor
21	Front Grille
22	Air Filter
23	Eva & Cond. Ass'y
24	Eva Blower Cover
25	Impeller CF
26	Eva Blower Body
27	Cabi motor bracket
28	Motor
29	Cond. Blower Body
30	Impeller CF 256pi
31	Cond. Blower Cover
32	Duct Mounter
33	Synchronous motor
34	Cabi Left
35	Top Cover
36	Front Controller
37	4.5" Cold-Air Nozzle Kit (optional)
38	7" Warm Air Nozzle Kit (optional)

WARRANTY

(Applicable to first retail purchaser only)

AIRREX PORTABLE AIR CONDITIONER gives more reliable performance, comfort and durability the more they are used. They are built under a strict quality assurance regime which includes inspection both during and after production and exhaustive reliability testing.

In the unlikely event you have any problems, please contact your Airrex U.S.A at 1-888-535-8841 dealer or distributor. If the problem is as a result of a production fault or failure, repairs will be undertaken free of charge during the period of warranty subject to the following warranty conditions:

1. The warranty period is 12 months from the date of first purchase.
2. If the problem has been caused by customer error or misuse, abuse or damage, then all repairs will be charged for.
3. This warranty applies to your country.
4. Proof and date of purchase must be supplied.
5. Please complete the details below and keep this warranty in a safe place.
6. All transport charges back to the dealer are at the customers cost. Keep all original packaging to facilitate return. Return to customer will be at dealers cost (if genuine warranty claim).

DESCRIPTION	AIRREX PORTABLE AIR CONDITIONER		
MODEL	HSC-11		
DATE OF PURCHASE		PRODUCT SERIAL NO:	

Warranty Period	(Months)	
DISTRIBUTOR	Name of Company	
	Telephone No.	

CUSTOMER DETAILS	Name :
	Address :
	Telephone :

MEMO.

AIRREX[®]

Manufactured by :
HEPHZIBAH CO. LTD.
1385-15 JUAN-DONG, NAM-GU
INCHEON, KOREA
TEL : +82-32-509-5834
FAX : +82-32-502-5519
E-mail : airrex@hdeok.com
Website : www.airrex.biz

Distributed by :
Airrex USA - Corporate Office
7005 Woodway Dr, Suite 206
Woodway, TX 76712
TEL : 888-535-8841
FAX : 469-574-7924
E-mail : sales@airrexusa.com
Website : www.airrexusa.com

Mailing Address:
P.O. Box 340
Hewitt, Texas 76643

● Designs and specifications of products are subject to change without prior notice for the improvement of products.