



Site Search:

- Homeowner
 - Golf Course Management
 - Commercial/Contractor
 - Sports Fields & Grounds
 - Professional
- Products
 - Customer Care
 - Financing
 - Dealer Locator
 - ShopToro



[Toro.com](#) > [Commercial/Contractor](#) > [Compact Utility Equipment](#) > [Dingo Tracked Models](#) > Model

22306

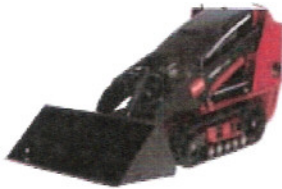
The Dingo TX 420 is designed with workers in mind. All of its power is harnessed in only 3 easy to use controls, which make it simple for any worker to step up and be productive immediately! This power is used to run over 35 Toro Dingo attachments. Its walk behind operator position provides 360° of view and outstanding operator mobility. When you step up to the Toro Dingo TX Compact Utility Loader, you'll feel the power!

Compact Utility Equipment

[Dingo Wheeled Models](#)

[Dingo Tracked Models](#)

Dealer Locator



Product Details

- 20 hp Kohler® engine
- 34.5" Wide
- Versatile
- Turf Friendliness

- USA OR CANADA
- TORO WORLDWIDE

NEED HELP PRINTING? [+](#)

[CLICK FOR LARGER](#)

Features	Accessories	Specifications
+ 20 HP Engine		Kohler® Command PRO™
+ Cooling System		Air cooled
+ Hydraulic Systm: Pressure		3000 psi system relief pressure
+ Flow		11.2 gpm
+ Reservoir Capacity		10.5 gallons
+ Track: Standard		Endless Kevlar rubber
+ Controls		Key, throttle, choke
+ Steering		Single control w/ ref. bar
+ Loader/ Hydraulic System		Joystick control for all funct
+ Dimensions: Grd Clearance		4.6"
+ Overall Length		92"
+ Overall Width		33.7"
+ Overall Height		46.1"
+ Hinge Pin Height		65.8"
+ Ground Speed		0-4.5pmh fwd, 1-2 rev.
+ Tip Capacity		1480 bls.
+ Rated Operating Capacity		500 lbs.
+ Weight (w/o narrow bucket)		1830 lbs.
+ Engine Warranty*		Two Year
+ Product Warranty*		One Year

[Customer Care](#)

[Helpful Links](#)